

\$164,900 - # 140 2436 Guardian Road Nw Nw, Edmonton

MLS® #E4221527

\$164,900

2 Bedroom, 2.00 Bathroom, 874 sqft
Condo / Townhouse on 0 Acres

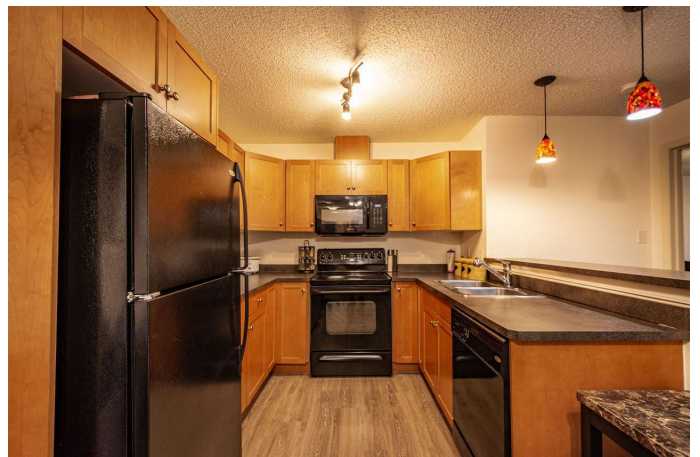
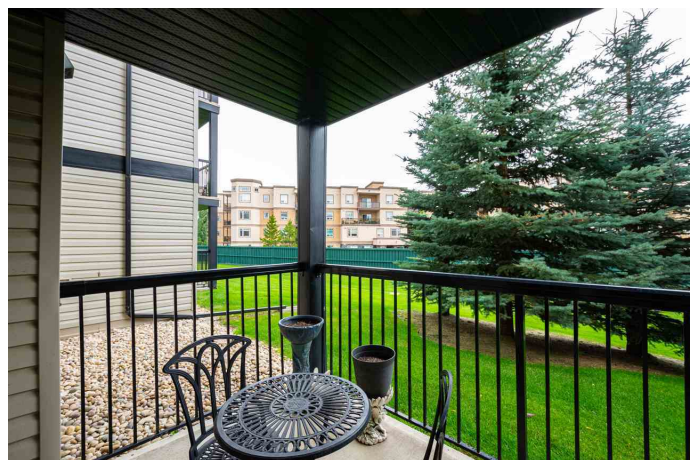
Glastonbury, Edmonton, AB

All you really need.....a great two bedroom, two full bathrooms, TWO PARKING (one underground/one outside) and your own IN SUITE LAUNDRY. Very clean and tidy. The sellers installed high end laminate 2 years ago for style and easy care. Do you like to exercise? There's a great workout room (temporarily closed) directly down the hall. A super location next to every amenity you'll ever need. Restaurants, groceries, salons, banks and so much more. Walk everywhere. The urban lifestyle. Excellent location to the Henday, Whitemud and out of town highways. On the road to a new adventure!

Built in 2005

Essential Information

| | |
|----------------|------------------------|
| MLS® # | E4221527 |
| Price | \$164,900 |
| Bedrooms | 2 |
| Bathrooms | 2.00 |
| Full Baths | 2 |
| Square Footage | 874 |
| Acres | 0.00 |
| Year Built | 2005 |
| Type | Condo |
| Sub-Type | Lowrise Apartment |
| Style | Single Level Apartment |



Status ACTIVE

Community Information

Address # 140 2436 Guardian Road Nw Nw
Area Edmonton
Subdivision Glastonbury
City Edmonton
County ALBERTA
Province AB
Postal Code T5T 2P5

Amenities

Features No Animal Home, No Smoking Home, Exercise Room
Parking Spaces 2
Parking Stall, Underground

Interior

Interior Ceramic Tile, Vinyl Plank
Interior Features Dishwasher-Built-In, Dryer, Garage Opener, Refrigerator, Stove-Electric, Washer, Window Coverings
Heating Hot Water
Bedrooms on Main Level Y
Basement None, No Basement
of Stories 1

Exterior

Exterior Brick, Stucco, Vinyl
Exterior Features Fruit Trees/Shrubs, Golf Nearby, Public Transportation, Shopping Nearby
Roof Asphalt Shingles
Construction Wood Frame
Foundation Concrete

Additional Information

Condo Fee \$366
Zoning RA7
HOA Fees 50.00
HOA Fees Freq. Annually

Listing information last updated on January 25th, 2021 at 1:16am MST