

\$1,342,320 - 6520 Meridian Street, Edmonton

MLS® #E4414785

\$1,342,320

0 Bedroom, 0.00 Bathroom,
Single Family on 39.48 Acres

Edmonton South East, Edmonton, AB

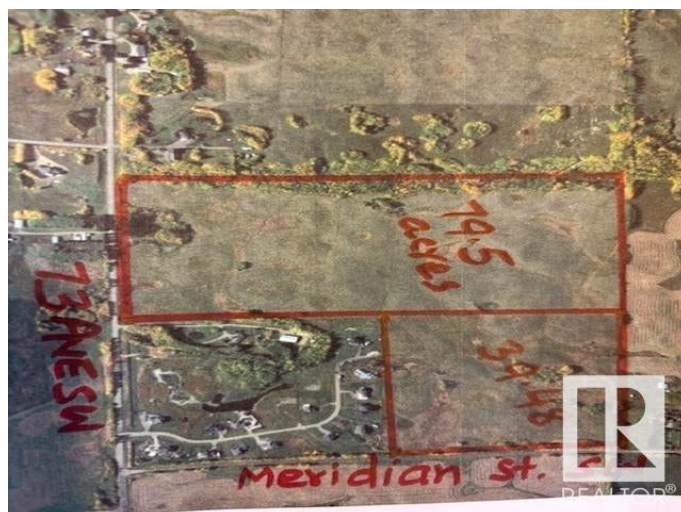
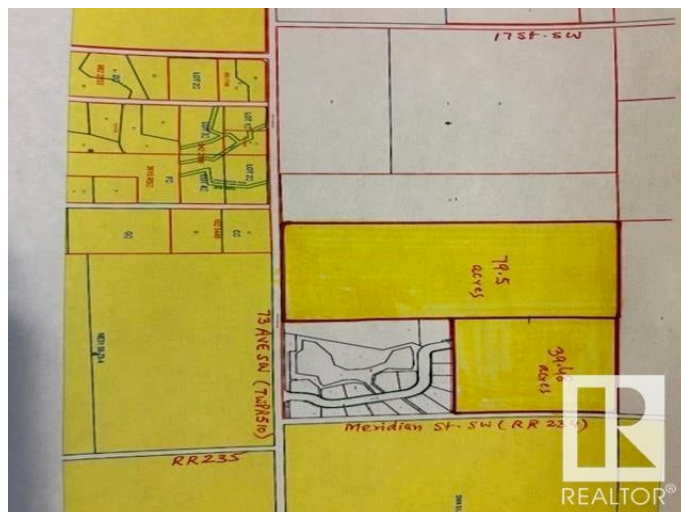
Excellent piece of land 39.48 acres located at 6520 Meridian Street SW in City of Edmonton. Amazing lands scheduled to be developed as URBAN RESIDENTIAL DEVELOPMENTS in southeast area of City of Edmonton. Enjoy the convenience of being minutes from a range of shopping areas of South Edmonton and City of Beaumont and premium outlet shopping at Edmonton International Airport. Build your dream homes at the time to enjoy the country living in City of Edmonton. These lands are situated at a very strategic location between Eagle Rock Golf Course and Coloniale Golf of City of Beaumont.

Essential Information

MLS® #	E4414785
Price	\$1,342,320
Bathrooms	0.00
Acres	39.48
Type	Single Family
Sub-Type	Vacant Lot/Land
Status	Active

Community Information

Address	6520 Meridian Street
Area	Edmonton
Subdivision	Edmonton South East



City	Edmonton
County	ALBERTA
Province	AB
Postal Code	T6X 2V4

Exterior

Exterior Features	Fenced, Golf Nearby, See Remarks
Lot Description	159,764.66 m2

Additional Information

Date Listed	November 28th, 2024
Days on Market	156
Zoning	Zone 33

DATA IS DEEMED RELIABLE BUT IS NOT GUARANTEED ACCURATE BY THE REALTORS® ASSOCIATION OF EDMONTON. COPYRIGHT 2025 BY THE REALTORS® ASSOCIATION OF EDMONTON. ALL RIGHTS RESERVED. Trademarks are owned or controlled by the Canadian Real Estate Association (CREA) and identify real estate professionals who are members of CREA (REALTOR®, REALTORS®) and/or the quality of services they provide (MLS®, Multiple Listing Service®)

Listing information last updated on May 3rd, 2025 at 12:32pm MDT