

\$314,999 - 430 5151 Windermere Boulevard, Edmonton

MLS® #E4424901

\$314,999

2 Bedroom, 2.00 Bathroom, 789 sqft

Condo / Townhouse on 0.00 Acres

Ambleside, Edmonton, AB

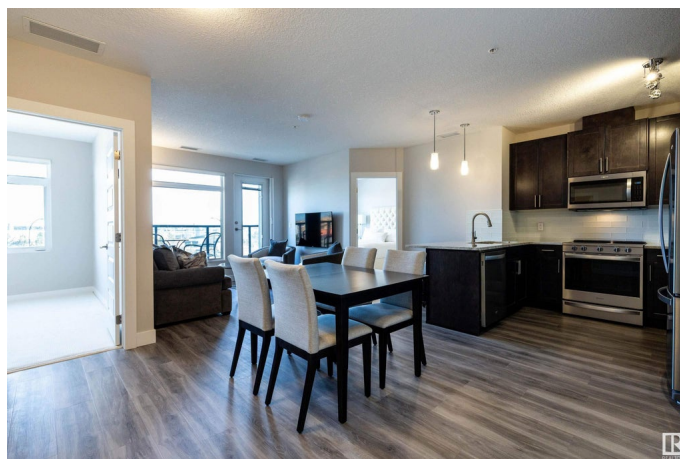
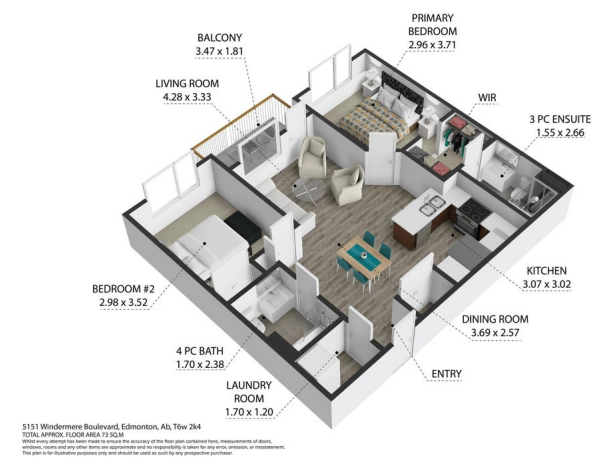
Welcome to this stunning NEWLY renovated property in the highly desired SIGNATURE building at Ambleside. Upon entering this 2 bedroom, 2 full bath home, you will immediately notice PRIDE OF OWNERSHIP and the abundance of NATURAL LIGHT. The luxurious kitchen is complete with UPGRADED stainless steel appliances and GRANITE countertops. A spacious dining and living room area offers the PERFECT floorpan, making gathering and entertaining a breeze. The first of the 2 bedrooms welcomes you, complete with WALK THROUGH closet and wonderful ENSUITE. The second bedroom, 4 piece bath and private LAUNDRY room completes the remainder of the LUXURIOUS interior. A generously appointed balcony offers exceptional VIEWS of nearby amenities and downtown Edmonton. HEATED ABOVE GROUND parking, on-site fitness room, meeting room, concierge service, ample visitor parking and DIRECT access to nearby amenities including restaurants, shopping, schools, transit and Henday - this home has it all!

Built in 2014

Essential Information

MLS® # E4424901

Price \$314,999



Bedrooms	2
Bathrooms	2.00
Full Baths	2
Square Footage	789
Acres	0.00
Year Built	2014
Type	Condo / Townhouse
Sub-Type	Apartment High Rise
Style	Single Level Apartment
Status	Active

Community Information

Address	430 5151 Windermere Boulevard
Area	Edmonton
Subdivision	Ambleside
City	Edmonton
County	ALBERTA
Province	AB
Postal Code	T6W 2K4

Amenities

Amenities	Air Conditioner, Exercise Room, No Animal Home, No Smoking Home, Parking-Extra, Parking-Visitor, Party Room, Recreation Room/Centre, Secured Parking, Security Door, Social Rooms
Parking	Heated

Interior

Interior Features	ensuite bathroom
Appliances	Dishwasher-Built-In, Dryer, Refrigerator, Stove-Electric, Washer, Window Coverings
Heating	Heat Pump, Natural Gas
# of Stories	12
Stories	1
Has Basement	Yes
Basement	None, No Basement

Exterior

Exterior	Concrete, Stucco
Exterior Features	Golf Nearby, Landscaped, Level Land, Playground Nearby, Public

Transportation, Schools, Shopping Nearby, View Downtown

Roof	EPDM Membrane
Construction	Concrete, Stucco
Foundation	Concrete Perimeter

Additional Information

Date Listed	March 10th, 2025
Days on Market	55
Zoning	Zone 56
HOA Fees	50
HOA Fees Freq.	Annually
Condo Fee	\$443

DATA IS DEEMED RELIABLE BUT IS NOT GUARANTEED ACCURATE BY THE REALTORS® ASSOCIATION OF EDMONTON. COPYRIGHT 2025 BY THE REALTORS® ASSOCIATION OF EDMONTON. ALL RIGHTS RESERVED. Trademarks are owned or controlled by the Canadian Real Estate Association (CREA) and identify real estate professionals who are members of CREA (REALTOR®, REALTORS®) and/or the quality of services they provide (MLS®, Multiple Listing Service®)

Listing information last updated on May 3rd, 2025 at 11:47pm MDT