

# \$539,997 - 7236 182 Avenue, Edmonton

MLS® #E4430182

**\$539,997**

4 Bedroom, 2.50 Bathroom, 1,901 sqft  
Single Family on 0.00 Acres

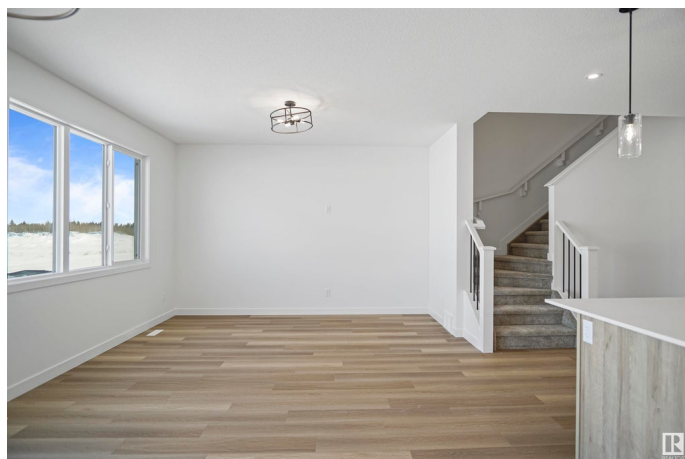
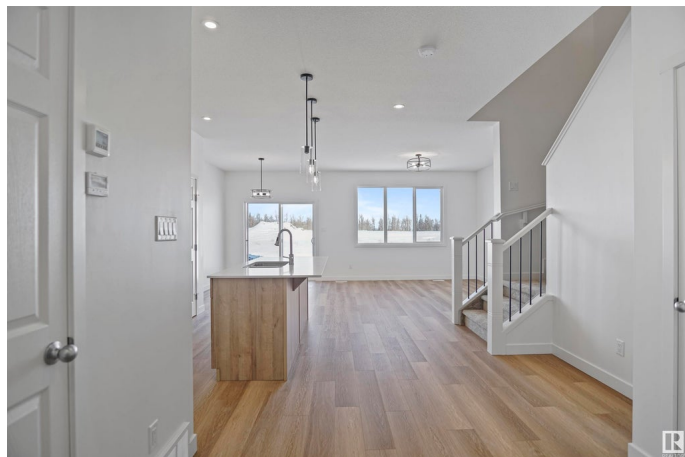
Crystallina Nera East, Edmonton, AB

Welcome to the "Kaylan" built by the award-winning builder Pacesetter homes located in the heart of North Edmonton in the community of Crystallina Nera east with beautiful natural surroundings. This home is located with in steps of the walking trails, parks and schools. As you enter the home you are greeted a large foyer which has luxury vinyl plank flooring throughout the main floor , the great room, kitchen, and the breakfast nook. Your large kitchen features tile back splash, an island a flush eating bar, quartz counter tops and an undermount sink. Just off of the kitchen and tucked away by the front entry is a 2 piece powder room. Upstairs is the master's retreat with a large walk in closet and a 4-piece en-suite. The second level also include 3 additional bedrooms with a conveniently placed main 4-piece bathroom. \*\*\*Home is under construction and the photos are from the same home recently built and may vary to be complete by June \*\*\*

Built in 2024

## Essential Information

MLS® #	E4430182
Price	\$539,997
Bedrooms	4
Bathrooms	2.50



Full Baths	2
Half Baths	1
Square Footage	1,901
Acres	0.00
Year Built	2024
Type	Single Family
Sub-Type	Detached Single Family
Style	2 Storey
Status	Active

### **Community Information**

Address	7236 182 Avenue
Area	Edmonton
Subdivision	Crystallina Nera East
City	Edmonton
County	ALBERTA
Province	AB
Postal Code	T5Z 0V6

### **Amenities**

Amenities	See Remarks
Parking	Double Garage Attached

### **Interior**

Interior Features	ensuite bathroom
Appliances	Garage Control, Garage Opener, See Remarks
Heating	Forced Air-1, Natural Gas
Stories	2
Has Basement	Yes
Basement	Full, Unfinished

### **Exterior**

Exterior	Wood, Stone, Vinyl
Exterior Features	Golf Nearby, Park/Reserve, Playground Nearby, Public Swimming Pool, Public Transportation, Schools, Shopping Nearby, See Remarks
Roof	Asphalt Shingles
Construction	Wood, Stone, Vinyl
Foundation	Concrete Perimeter

### **Additional Information**

Date Listed April 10th, 2025

Days on Market 22

Zoning Zone 28

DATA IS DEEMED RELIABLE BUT IS NOT GUARANTEED ACCURATE BY THE REALTORS® ASSOCIATION OF EDMONTON. COPYRIGHT 2025 BY THE REALTORS® ASSOCIATION OF EDMONTON. ALL RIGHTS RESERVED. Trademarks are owned or controlled by the Canadian Real Estate Association (CREA) and identify real estate professionals who are members of CREA (REALTOR®, REALTORS®) and/or the quality of services they provide (MLS®, Multiple Listing Service®)

Listing information last updated on May 2nd, 2025 at 8:17pm MDT