

\$634,900 - 257 Reichert Drive, Beaumont

MLS® #E4430336

\$634,900

4 Bedroom, 3.50 Bathroom, 2,197 sqft

Single Family on 0.00 Acres

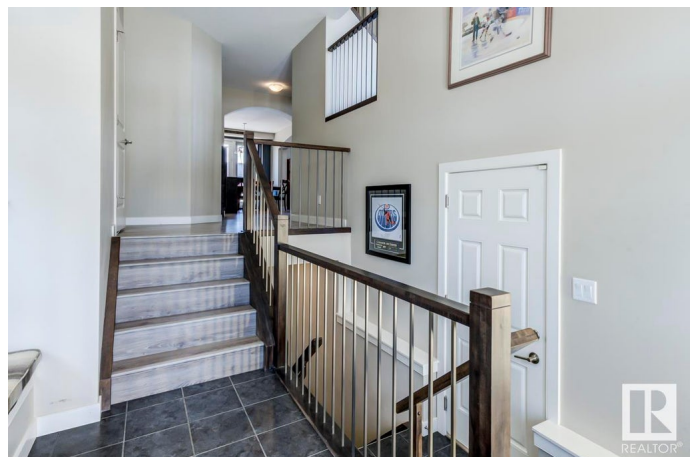
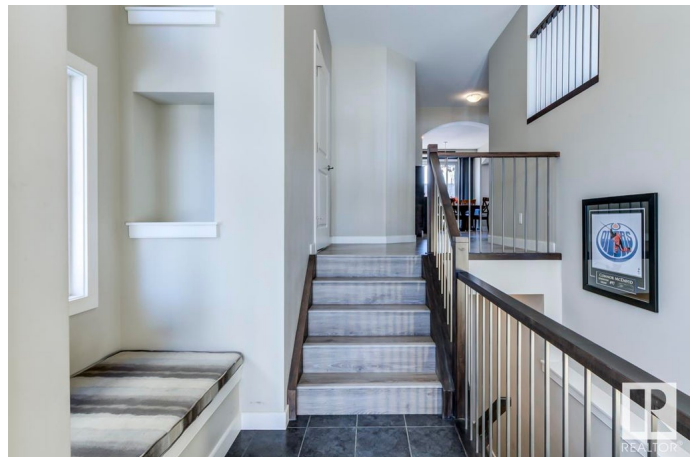
Coloniale Estates (Beaumont), Beaumont, AB

Welcome to this stunning 2.5-storey home in Coloniale Estates! Steps from the driving range, over 2,200 sq. ft. gem features a charming front veranda and a heated double garage with custom cabinets. Inside, 9' ceilings enhance the open-concept main floor, while the spacious kitchen boasts granite countertops and a massive walk-in pantry with a stand-up freezer. The upper level offers a convenient laundry room with a sink and a luxurious master retreat with a spa-like 5-piece ensuite. Vaulted ceilings elevate the bonus room and one bedroom. The finished basement includes a fourth bedroom and a 3-piece bath. Outside, enjoy a landscaped yard, a large deck, and a custom-built shed. Extras include central A/C, built-in vac, dry-core basement sub flooring, an oversized water tank, and a gas fireplace. Thoughtfully designed with premium upgrades throughout, this home is a must-see!

Built in 2015

Essential Information

MLS® #	E4430336
Price	\$634,900
Bedrooms	4
Bathrooms	3.50
Full Baths	3



Half Baths	1
Square Footage	2,197
Acres	0.00
Year Built	2015
Type	Single Family
Sub-Type	Detached Single Family
Style	2 and Half Storey
Status	Active

Community Information

Address	257 Reichert Drive
Area	Beaumont
Subdivision	Coloniale Estates (Beaumont)
City	Beaumont
County	ALBERTA
Province	AB
Postal Code	T4X 1Z7

Amenities

Amenities	Ceiling 9 ft.
Parking	Double Garage Attached, Over Sized

Interior

Interior Features	ensuite bathroom
Appliances	Air Conditioning-Central, Dishwasher-Built-In, Dryer, Freezer, Garage Control, Garage Opener, Microwave Hood Fan, Refrigerator, Storage Shed, Stove-Electric, Vacuum System Attachments, Vacuum Systems, Washer
Heating	Forced Air-1, Natural Gas
Fireplace	Yes
Fireplaces	Mantel, Stone Facing
Stories	4
Has Basement	Yes
Basement	Full, Finished

Exterior

Exterior	Wood, Vinyl
Exterior Features	Fenced, Golf Nearby, Hillside, Public Transportation, Schools, Shopping Nearby

Roof	Asphalt Shingles
Construction	Wood, Vinyl
Foundation	Concrete Perimeter

Additional Information

Date Listed	April 11th, 2025
Days on Market	22
Zoning	Zone 82

DATA IS DEEMED RELIABLE BUT IS NOT GUARANTEED ACCURATE BY THE REALTORS® ASSOCIATION OF EDMONTON. COPYRIGHT 2025 BY THE REALTORS® ASSOCIATION OF EDMONTON. ALL RIGHTS RESERVED.Trademarks are owned or controlled by the Canadian Real Estate Association (CREA) and identify real estate professionals who are members of CREA (REALTOR®, REALTORS®) and/or the quality of services they provide (MLS®, Multiple Listing Service®)

Listing information last updated on May 3rd, 2025 at 9:47am MDT