

\$650,000 - 524 Wahstao Road, Edmonton

MLS® #E4432379

\$650,000

4 Bedroom, 2.50 Bathroom, 2,571 sqft

Single Family on 0.00 Acres

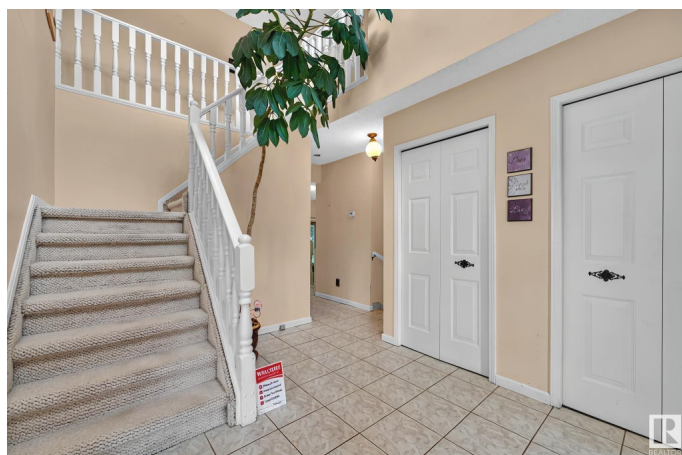
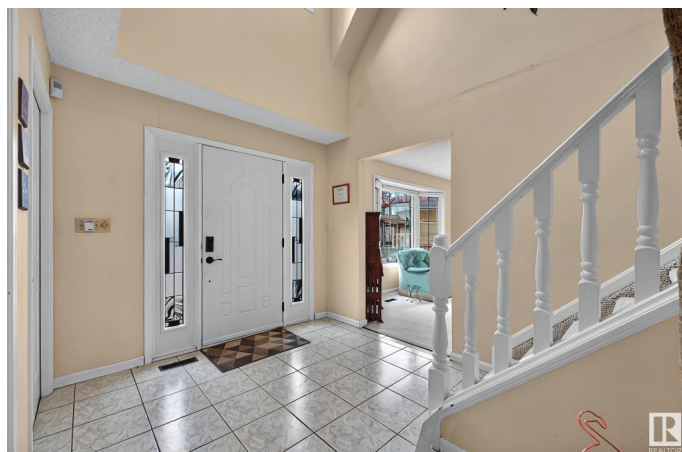
Oleskiw, Edmonton, AB

Charming Colonial-style home in the prestigious Country Club/Wolf Willow community! Nestled in a quiet cul-de-sac on a spacious pie lot, this hidden gem offers ultimate privacy and space to entertain. With 4 bedrooms upstairs, there's room for the whole family. The MASSIVE primary suite is truly one-of-a-kind featuring a cozy wood-burning fireplace, private balcony, and the space for a nursery or to design your dream ensuite and closet. This home features triple-pane vinyl windows throughout for year-round efficiency and comfort. Oversized 24x24 Double attached garage will accommodate all your toys. Sunny west facing yard for endless playtime! Just steps to ravine trails, parks, tennis & pickleball courts, skating rinks, and more—this is your chance to own in one of Edmonton's most coveted neighborhoods!

Built in 1979

Essential Information

MLS® #	E4432379
Price	\$650,000
Bedrooms	4
Bathrooms	2.50
Full Baths	2
Half Baths	1



Square Footage	2,571
Acres	0.00
Year Built	1979
Type	Single Family
Sub-Type	Detached Single Family
Style	2 Storey
Status	Active

Community Information

Address	524 Wahstao Road
Area	Edmonton
Subdivision	Oleskiw
City	Edmonton
County	ALBERTA
Province	AB
Postal Code	T5T 2Y1

Amenities

Amenities	Patio, Racquet Courts, Recreation Room/Centre, Tennis Courts, Vinyl Windows, Vacuum System-Roughed-In, Natural Gas Stove Hookup
Parking Spaces	4
Parking	Double Garage Attached, Insulated, Over Sized

Interior

Interior Features	ensuite bathroom
Appliances	Dishwasher-Built-In, Dryer, Garage Opener, Refrigerator, Stove-Gas, Washer, Window Coverings
Heating	Forced Air-2, Natural Gas
Fireplace	Yes
Fireplaces	Brick Facing
Stories	2
Has Basement	Yes
Basement	Full, Partially Finished

Exterior

Exterior	Wood, Brick, Metal
Exterior Features	Cul-De-Sac, Fenced, Fruit Trees/Shrubs, Golf Nearby, Landscaped, No Through Road, Picnic Area, Playground Nearby, Public Swimming Pool, Public Transportation, Schools, Shopping Nearby, Treed Lot

Roof	Asphalt Shingles
Construction	Wood, Brick, Metal
Foundation	Concrete Perimeter

School Information

Elementary	Patricia Heights
Middle	Hillcrest / S.Bruce Smith
High	Jasper Place /Oscar Romero

Additional Information

Date Listed	April 24th, 2025
Days on Market	8
Zoning	Zone 22

DATA IS DEEMED RELIABLE BUT IS NOT GUARANTEED ACCURATE BY THE REALTORS® ASSOCIATION OF EDMONTON. COPYRIGHT 2025 BY THE REALTORS® ASSOCIATION OF EDMONTON. ALL RIGHTS RESERVED.Trademarks are owned or controlled by the Canadian Real Estate Association (CREA) and identify real estate professionals who are members of CREA (REALTOR®, REALTORS®) and/or the quality of services they provide (MLS®, Multiple Listing Service®)

Listing information last updated on May 2nd, 2025 at 8:47pm MDT