

\$459,900 - 5254 162a Avenue, Edmonton

MLS® #E4432866

\$459,900

5 Bedroom, 3.50 Bathroom, 1,563 sqft
Single Family on 0.00 Acres

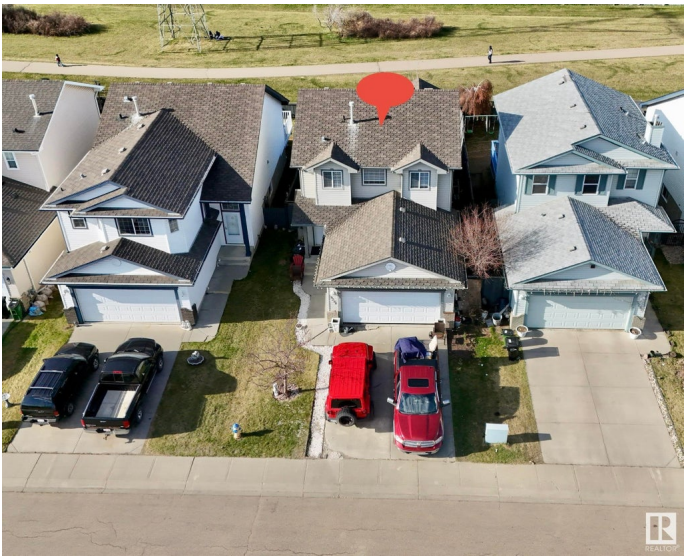
Hollick-Kenyon, Edmonton, AB

Welcome to this spacious and beautifully maintained single-family home, complete with a front double car garage and ideally located within walking distance to schools, shopping plazas, and scenic walking trails just steps from your backyard. Built in 2003, this charming property offers 5 bedrooms, 3.5 bathrooms, and over 2,100 sq ft of living space, including a fully developed Basement. Recent updates include a new hot water tank (2023), upgraded flooring, a convenient Extra Kitchen in the garage, and a delightful backyard gazebo – perfect for outdoor gatherings. Whether you're a first-time home buyer, investor, or growing family, this versatile home is ready to meet all your needs!

Built in 2003

Essential Information

| | |
|----------------|-----------|
| MLS® # | E4432866 |
| Price | \$459,900 |
| Bedrooms | 5 |
| Bathrooms | 3.50 |
| Full Baths | 3 |
| Half Baths | 1 |
| Square Footage | 1,563 |
| Acres | 0.00 |
| Year Built | 2003 |



| | |
|----------|------------------------|
| Type | Single Family |
| Sub-Type | Detached Single Family |
| Style | 2 Storey |
| Status | Active |

Community Information

| | |
|-------------|------------------|
| Address | 5254 162a Avenue |
| Area | Edmonton |
| Subdivision | Hollick-Kenyon |
| City | Edmonton |
| County | ALBERTA |
| Province | AB |
| Postal Code | T5Y 3C7 |

Amenities

| | |
|-----------|------------------------|
| Amenities | Gazebo |
| Parking | Double Garage Attached |

Interior

| | |
|-------------------|---|
| Interior Features | ensuite bathroom |
| Appliances | Dishwasher-Built-In, Dryer, Garage Control, Hood Fan, Stove-Electric, Washer, See Remarks |
| Heating | Forced Air-1, Electric, Natural Gas |
| Stories | 3 |
| Has Basement | Yes |
| Basement | Full, Finished |

Exterior

| | |
|-------------------|---|
| Exterior | Wood, Vinyl |
| Exterior Features | Fenced, Landscaped, Playground Nearby, Schools, Shopping Nearby |
| Roof | Asphalt Shingles |
| Construction | Wood, Vinyl |
| Foundation | Concrete Perimeter |

Additional Information

| | |
|----------------|------------------|
| Date Listed | April 25th, 2025 |
| Days on Market | 6 |
| Zoning | Zone 03 |

DATA IS DEEMED RELIABLE BUT IS NOT GUARANTEED ACCURATE BY THE REALTORS® ASSOCIATION OF

EDMONTON. COPYRIGHT 2025 BY THE REALTORS® ASSOCIATION OF EDMONTON. ALL RIGHTS RESERVED.Trademarks are owned or controlled by the Canadian Real Estate Association (CREA) and identify real estate professionals who are members of CREA (REALTOR®, REALTORS®) and/or the quality of services they provide (MLS®, Multiple Listing Service®)

Listing information last updated on May 1st, 2025 at 10:47am MDT