

# \$639,900 - 10 Dalquist Bay, Leduc

MLS® #E4433750

**\$639,900**

4 Bedroom, 2.50 Bathroom, 2,412 sqft  
Single Family on 0.00 Acres

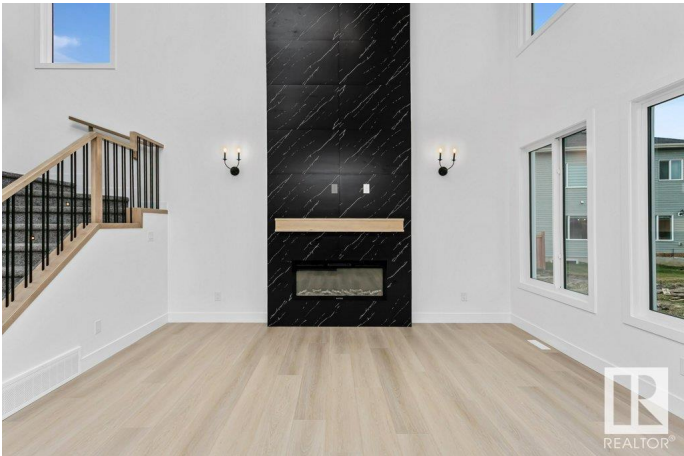
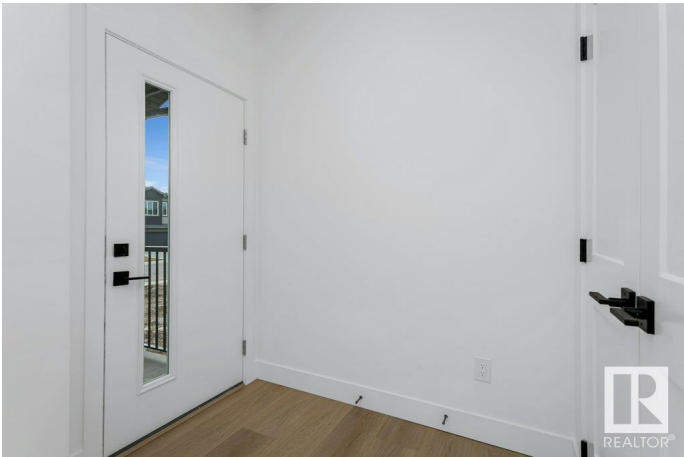
Meadowview Park\_LEDU, Leduc, AB

If you're searching for a home with ample square footage for the entire family, look no further! This stunning property offers 2,412 square feet of living space. The functional and stylish kitchen features a large island, an extended kitchen into the dining room, and a convenient walk-through pantry. The living room boasts a striking floor-to-ceiling tiled fireplace and has an open-to-above design, creating a spacious feel. On the main floor, there's a den that is perfect for a home office. Upstairs, you'll find a bonus room ideal for the kids, as well as a generous master bedroom complete with a beautiful feature wall, a luxurious 5-piece ensuite, and a walk-in closet. Additionally, there are three more bedrooms, a 4-piece bathroom, and a laundry room on this level. You'll appreciate the convenience of an attached garage.

Built in 2024

## Essential Information

MLS® #	E4433750
Price	\$639,900
Bedrooms	4
Bathrooms	2.50
Full Baths	2
Half Baths	1
Square Footage	2,412



Acres	0.00
Year Built	2024
Type	Single Family
Sub-Type	Detached Single Family
Style	2 Storey
Status	Active

### Community Information

Address	10 Dalquist Bay
Area	Leduc
Subdivision	Meadowview Park_LEDU
City	Leduc
County	ALBERTA
Province	AB
Postal Code	T9E 1N7

### Amenities

Amenities	Ceiling 9 ft.
Parking	Double Garage Attached

### Interior

Interior Features	ensuite bathroom
Appliances	None
Heating	Forced Air-1, Natural Gas
Stories	2
Has Basement	Yes
Basement	Full, Unfinished

### Exterior

Exterior	Wood, Vinyl
Exterior Features	Park/Reserve, Schools
Roof	Asphalt Shingles
Construction	Wood, Vinyl
Foundation	Concrete Perimeter

### Additional Information

Date Listed	April 30th, 2025
Days on Market	76
Zoning	Zone 81

DATA IS DEEMED RELIABLE BUT IS NOT GUARANTEED ACCURATE BY THE REALTORS® ASSOCIATION OF EDMONTON. COPYRIGHT 2025 BY THE REALTORS® ASSOCIATION OF EDMONTON. ALL RIGHTS RESERVED.Trademarks are owned or controlled by the Canadian Real Estate Association (CREA) and identify real estate professionals who are members of CREA (REALTOR®, REALTORS®) and/or the quality of services they provide (MLS®, Multiple Listing Service®)

Listing information last updated on July 15th, 2025 at 5:32pm MDT