

## \$635,000 - 3938 Cherrycove, Edmonton

MLS® #E4433872

**\$635,000**

5 Bedroom, 3.50 Bathroom, 2,173 sqft

Single Family on 0.00 Acres

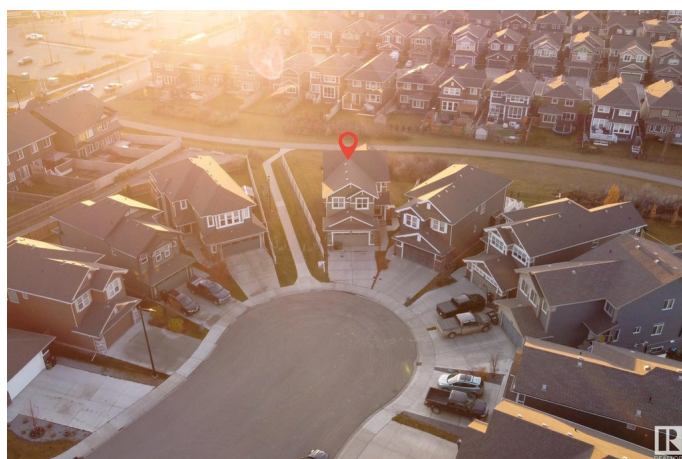
The Orchards At Ellerslie, Edmonton, AB

Welcome to this beautifully maintained almost 2200 sqft single-family home, nestled in a quiet crescent and surrounded by parks, scenic lakes, and endless walking trails. Backing onto walking trail adds more pleasure to sitting in backyard. Perfect for growing families, this 6-bedroom, 3.5-bathroom home offers both space and functionality in one of the area's most desirable neighborhoods. Step inside to discover a thoughtfully designed layout featuring a main floor den, ideal for a home office or study, and a walkthrough pantry connecting the mudroom to a stylish

Built in 2015

### Essential Information

|                |                        |
|----------------|------------------------|
| MLS® #         | E4433872               |
| Price          | \$635,000              |
| Bedrooms       | 5                      |
| Bathrooms      | 3.50                   |
| Full Baths     | 3                      |
| Half Baths     | 1                      |
| Square Footage | 2,173                  |
| Acres          | 0.00                   |
| Year Built     | 2015                   |
| Type           | Single Family          |
| Sub-Type       | Detached Single Family |



|        |          |
|--------|----------|
| Style  | 2 Storey |
| Status | Active   |

### Community Information

|             |                           |
|-------------|---------------------------|
| Address     | 3938 Cherrycove           |
| Area        | Edmonton                  |
| Subdivision | The Orchards At Ellerslie |
| City        | Edmonton                  |
| County      | ALBERTA                   |
| Province    | AB                        |
| Postal Code | T6X 2B3                   |

### Amenities

|           |  |
|-----------|--|
| Amenities | Ceiling 9 ft., Deck, No Animal Home, No Smoking Home |
| Parking   | Double Garage Attached                               |

### Interior

|                   |  |
|-------------------|--|
| Interior Features | ensuite bathroom   |
| Appliances        | Dishwasher-Built-In, Dryer, Garage Opener, Hood Fan, Oven-Microwave, Refrigerator, Stove-Gas, Washer |
| Heating           | Forced Air-1, Natural Gas  |
| Stories           | 3  |
| Has Suite         | Yes  |
| Has Basement      | Yes  |
| Basement          | Full, Finished   |

### Exterior

|                   |  |
|-------------------|--|
| Exterior          | Wood, Vinyl  |
| Exterior Features | Airport Nearby, Backs Onto Park/Trees, Corner Lot, Cul-De-Sac, Fenced, Landscaped, Low Maintenance Landscape, No Back Lane, Playground Nearby, Public Transportation, Schools, Shopping Nearby |
| Roof              | Asphalt Shingles   |
| Construction      | Wood, Vinyl  |
| Foundation        | Concrete Perimeter   |

### School Information

|            |                           |
|------------|---------------------------|
| Elementary | Jan Reimer School         |
| Middle     | Jan Reimer School         |
| High       | J. Percy Page High School |

**Additional Information**

|                |               |
|----------------|---------------|
| Date Listed    | May 1st, 2025 |
| Days on Market | 1             |
| Zoning         | Zone 53       |
| HOA Fees       | 300           |
| HOA Fees Freq. | Annually      |

DATA IS DEEMED RELIABLE BUT IS NOT GUARANTEED ACCURATE BY THE REALTORS® ASSOCIATION OF EDMONTON. COPYRIGHT 2025 BY THE REALTORS® ASSOCIATION OF EDMONTON. ALL RIGHTS RESERVED.Trademarks are owned or controlled by the Canadian Real Estate Association (CREA) and identify real estate professionals who are members of CREA (REALTOR®, REALTORS®) and/or the quality of services they provide (MLS®, Multiple Listing Service®)

Listing information last updated on May 2nd, 2025 at 6:47pm MDT