

## \$489,000 - 7692 Schmid Crescent, Edmonton

MLS® #E4434378

**\$489,000**

3 Bedroom, 2.50 Bathroom, 1,556 sqft

Single Family on 0.00 Acres

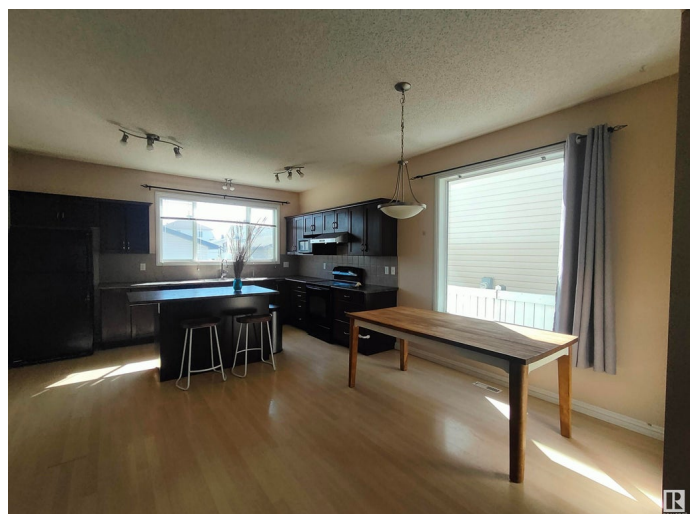
South Terwillegar, Edmonton, AB

Step into this spacious and well-maintained 2-storey home offering over 1,556 SqFt of comfortable living space. The master bedroom features a 4-piece ensuite bathroom and a walk-in closet. There are 2 bedrooms and a 4-piece main bathroom. Featuring a double detached garage, a charming large front porch, sizable front and back entrance areas, and a thoughtfully framed basement ready for your personal touch. Upgrades include a cozy fireplace, elegant ceramic tile flooring in the bathrooms, and newly installed carpet throughout. Located just steps from schools and playgrounds, this home is a rare find for its generous size and layout. A perfect blend of style, space, and potentialâ€”donâ€™t miss it!

Built in 2007

### Essential Information

MLS® #	E4434378
Price	\$489,000
Bedrooms	3
Bathrooms	2.50
Full Baths	2
Half Baths	1
Square Footage	1,556
Acres	0.00
Year Built	2007



Type	Single Family
Sub-Type	Detached Single Family
Style	2 Storey
Status	Active

### Community Information

Address	7692 Schmid Crescent
Area	Edmonton
Subdivision	South Terwillegar
City	Edmonton
County	ALBERTA
Province	AB
Postal Code	T6R 0K7

### Amenities

Amenities	Hot Water Natural Gas, No Smoking Home
Parking	Double Garage Detached

### Interior

Interior Features	ensuite bathroom
Appliances	Dishwasher-Built-In, Dryer, Garage Opener, Refrigerator, Stove-Electric, Washer
Heating	Forced Air-1, Natural Gas
Stories	2
Has Basement	Yes
Basement	Full, Partially Finished

### Exterior

Exterior	Wood, Vinyl
Exterior Features	Schools, Shopping Nearby
Roof	Asphalt Shingles
Construction	Wood, Vinyl
Foundation	Concrete Perimeter

### Additional Information

Date Listed	May 3rd, 2025
Days on Market	7
Zoning	Zone 14
HOA Fees	135

HOA Fees Freq.     Annually

DATA IS DEEMED RELIABLE BUT IS NOT GUARANTEED ACCURATE BY THE REALTORS® ASSOCIATION OF EDMONTON. COPYRIGHT 2025 BY THE REALTORS® ASSOCIATION OF EDMONTON. ALL RIGHTS RESERVED.Trademarks are owned or controlled by the Canadian Real Estate Association (CREA) and identify real estate professionals who are members of CREA (REALTOR®, REALTORS®) and/or the quality of services they provide (MLS®, Multiple Listing Service®)

Listing information last updated on May 10th, 2025 at 4:17pm MDT