

# \$8,545,470 - 5910 70 Street, Edmonton

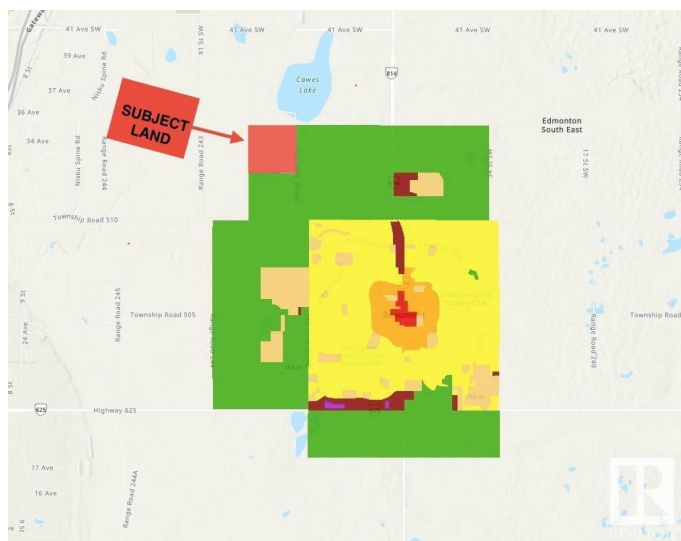
MLS® #E4434446

**\$8,545,470**

0 Bedroom, 0.00 Bathroom,  
Land Commercial on 0.00 Acres

Edmonton South East, Edmonton, AB

Prime 153.82-Acre Parcel for Future Residential Development â€” Southeast Edmonton Located at 5910 - 70 Street SW, within the City of Edmonton (on Range Road 242 between 41 Avenue SW and Township Road 510), this expansive 153.82-acre property offers a rare opportunity for investment and future growth. Currently under cultivation, the land is part of the inter-municipal planning framework and is designated for future urban residential development. With limited large parcels remaining in this rapidly growing southeast Edmonton corridor, this property presents exceptional long-term potential at a highly attractive price.

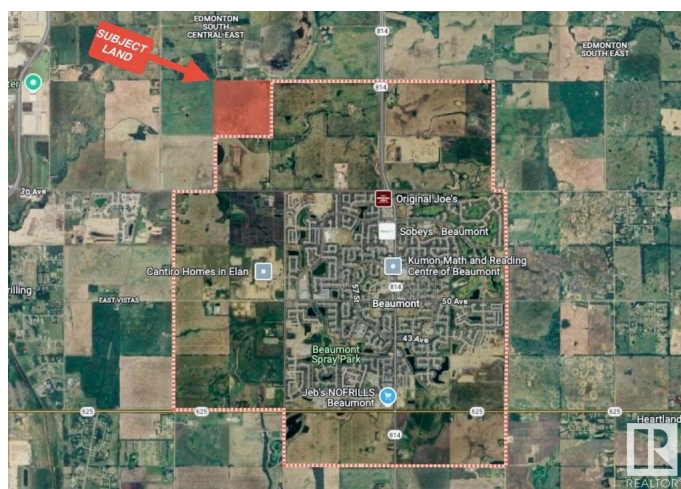


## Essential Information

MLS® #	E4434446
Price	\$8,545,470
Bathrooms	0.00
Acres	0.00
Type	Land Commercial
Status	Active

## Community Information

Address	5910 70 Street
Area	Edmonton



Subdivision	Edmonton South East
City	Edmonton
County	ALBERTA
Province	AB
Postal Code	T4X 0N3

### **Additional Information**

Date Listed	May 4th, 2025
Days on Market	69
Zoning	Zone 33

DATA IS DEEMED RELIABLE BUT IS NOT GUARANTEED ACCURATE BY THE REALTORS® ASSOCIATION OF EDMONTON. COPYRIGHT 2025 BY THE REALTORS® ASSOCIATION OF EDMONTON. ALL RIGHTS RESERVED. Trademarks are owned or controlled by the Canadian Real Estate Association (CREA) and identify real estate professionals who are members of CREA (REALTOR®, REALTORS®) and/or the quality of services they provide (MLS®, Multiple Listing Service®)

Listing information last updated on July 12th, 2025 at 12:48pm MDT