

\$169,000 - 353 10520 120 Street, Edmonton

MLS® #E4434529

\$169,000

2 Bedroom, 2.00 Bathroom, 782 sqft

Condo / Townhouse on 0.00 Acres

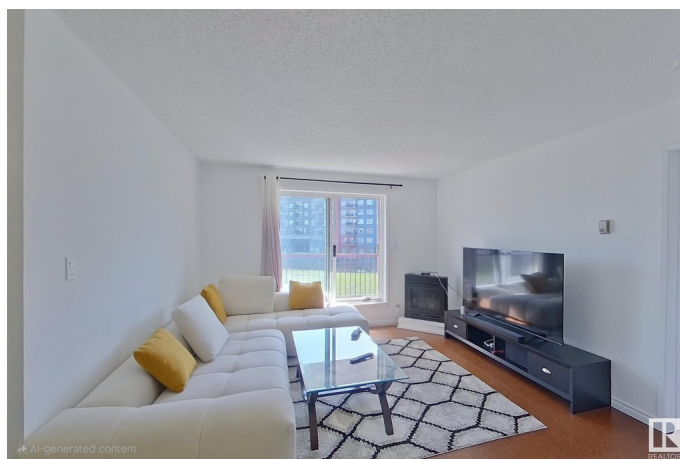
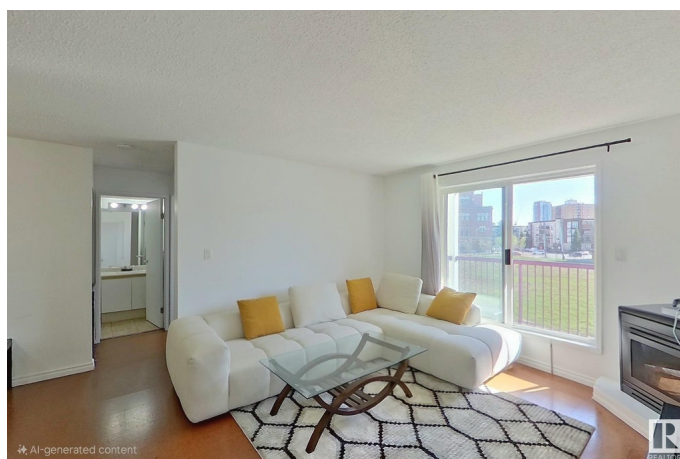
Queen Mary Park, Edmonton, AB

Pleasantly updated 2 bedroom, 2 bathroom condo overlooks a Sunny Park in downtown Queen Mary Park. Located on the third floor this well maintained building is close to shopping, restaurants and public transportation. Large master bedroom with walk through closet and separate ensuite. 2nd bedroom is also a very good size. Brightly painted with clean bright walls. Spacious living room with corner gas fireplace. Southfacing Balcony overlooking the park is private. Assigned parking stall #269. Newer washer and dryer. Galley Kitchen with all appliances. Move in ready. Condo Fees are \$402 and include heat and water.

Built in 1994

Essential Information

MLS® #	E4434529
Price	\$169,000
Bedrooms	2
Bathrooms	2.00
Full Baths	2
Square Footage	782
Acres	0.00
Year Built	1994
Type	Condo / Townhouse
Sub-Type	Lowrise Apartment



Style	Single Level Apartment
Status	Active

Community Information

Address	353 10520 120 Street
Area	Edmonton
Subdivision	Queen Mary Park
City	Edmonton
County	ALBERTA
Province	AB
Postal Code	T5H 4L9

Amenities

Amenities	No Smoking Home
Parking	Stall

Interior

Interior Features	ensuite bathroom
Appliances	Dishwasher-Built-In, Dryer, Refrigerator, Stove-Electric, Washer
Heating	Hot Water, Natural Gas
Fireplace	Yes
Fireplaces	Corner
# of Stories	4
Stories	1
Has Basement	Yes
Basement	None, No Basement

Exterior

Exterior	Wood, Stucco
Exterior Features	Landscaped, Public Transportation, Shopping Nearby
Roof	Asphalt Shingles
Construction	Wood, Stucco
Foundation	Concrete Perimeter

Additional Information

Date Listed	May 5th, 2025
Days on Market	8
Zoning	Zone 08
Condo Fee	\$402

DATA IS DEEMED RELIABLE BUT IS NOT GUARANTEED ACCURATE BY THE REALTORS® ASSOCIATION OF EDMONTON. COPYRIGHT 2025 BY THE REALTORS® ASSOCIATION OF EDMONTON. ALL RIGHTS RESERVED.Trademarks are owned or controlled by the Canadian Real Estate Association (CREA) and identify real estate professionals who are members of CREA (REALTOR®, REALTORS®) and/or the quality of services they provide (MLS®, Multiple Listing Service®)

Listing information last updated on May 13th, 2025 at 5:32pm MDT