

## \$539,900 - 18519 82 Avenue, Edmonton

MLS® #E4434889

**\$539,900**

4 Bedroom, 3.00 Bathroom, 1,559 sqft

Single Family on 0.00 Acres

Aldergrove, Edmonton, AB

Situated on a beautiful lot BACKING ONTO A SERENE GREEN SPACE, this charming BUNGALOW features an open-concept floor plan designed for both comfort and functionality. The spacious kitchen flows seamlessly into a well-proportioned family room, creating an inviting space for everyday living and entertaining. The main floor also offers a generous formal dining room and living area, along with 3 well appointed bedrooms. The primary suite includes a large 3pce ensuite and all 4 bedroom closets are outfitted with custom California Closets inserts. The fully finished basement adds valuable living space, featuring a 4th bedroom, a 3pce bath, generous laundry & ample storage. Outdoors, the private backyard is beautifully landscaped w/ mature perennial gardens & features a large covered patio-perfect for relaxing or entertaining. A garden shed provides extra storage, while a covered walkway leads conveniently to the double attached garage (19'5" x 21'9").

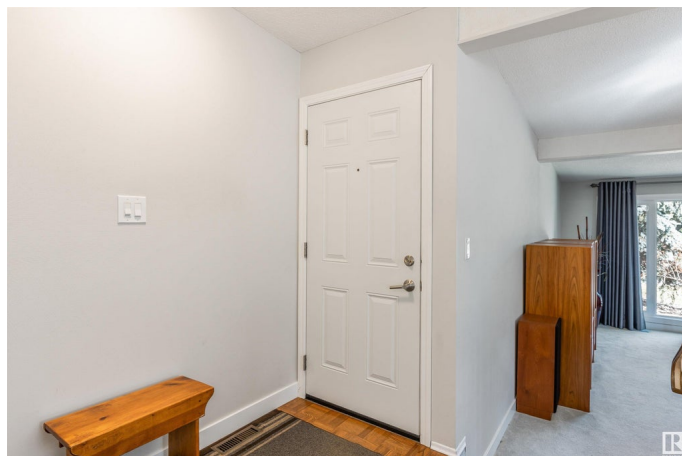
Built in 1975

### Essential Information

MLS® # E4434889

Price \$539,900

Bedrooms 4



Bathrooms	3.00
Full Baths	3
Square Footage	1,559
Acres	0.00
Year Built	1975
Type	Single Family
Sub-Type	Detached Single Family
Style	Bungalow
Status	Active

### Community Information

Address	18519 82 Avenue
Area	Edmonton
Subdivision	Aldergrove
City	Edmonton
County	ALBERTA
Province	AB
Postal Code	T5T 1G2

### Amenities

Amenities	No Animal Home, See Remarks
Parking	Double Garage Attached

### Interior

Interior Features	ensuite bathroom
Appliances	Air Conditioning-Central, Dishwasher-Built-In, Dryer, Garage Control, Garage Opener, Garburator, Refrigerator, Stove-Electric, Vacuum System Attachments, Vacuum Systems, Washer
Heating	Forced Air-1, Natural Gas
Fireplace	Yes
Fireplaces	Stone Facing
Stories	2
Has Basement	Yes
Basement	Full, Finished

### Exterior

Exterior	Wood, Metal, Stucco
Exterior Features	Fenced, Landscaped, Park/Reserve, See Remarks
Roof	Asphalt Shingles

Construction	Wood, Metal, Stucco
Foundation	Concrete Perimeter

**Additional Information**

Date Listed	May 7th, 2025
Days on Market	3
Zoning	Zone 20

DATA IS DEEMED RELIABLE BUT IS NOT GUARANTEED ACCURATE BY THE REALTORS® ASSOCIATION OF EDMONTON. COPYRIGHT 2025 BY THE REALTORS® ASSOCIATION OF EDMONTON. ALL RIGHTS RESERVED.Trademarks are owned or controlled by the Canadian Real Estate Association (CREA) and identify real estate professionals who are members of CREA (REALTOR®, REALTORS®) and/or the quality of services they provide (MLS®, Multiple Listing Service®)

Listing information last updated on May 10th, 2025 at 4:47am MDT