

\$435,000 - 2290 Glenridding Boulevard, Edmonton

MLS® #E4435512

\$435,000

3 Bedroom, 2.50 Bathroom, 1,349 sqft

Single Family on 0.00 Acres

Glenridding Heights, Edmonton, AB

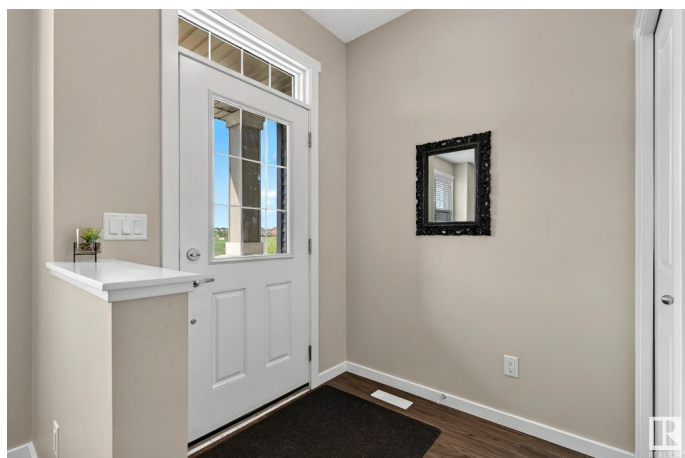
Best priced townhome in Glenridding with no condo fees! Original owner in showhome condition! Located in the highly sought after neighbourhood of Glenridding across from an open greenfield & playground. Excellent open plan with neutral colours & quality finishings throughout. You will feel at home as you walk in the inviting foyer. Cozy living room with a huge picturesque window. Good size dining area. Nice kitchen has ample cabinets, large island, pantry & a big window above the sink overlooking the private fenced yard. Beautiful quartz counter-tops, tiled backsplash & stainless steel appliances. Conveniently located powder room next to the mud room & back door onto the deck. Upstairs features the sunny master bedroom with another large picturesque window, walk-in closet & a beautiful ensuite w/double walk-in shower & a privacy window. Two more good sized bedrooms & a main bath. Two car garage with a driveway at the back. Close to all amenities such as shopping, transportation, parks & trails. It's a 10!

Built in 2018

Essential Information

MLS® # E4435512

Price \$435,000



Bedrooms	3
Bathrooms	2.50
Full Baths	2
Half Baths	1
Square Footage	1,349
Acres	0.00
Year Built	2018
Type	Single Family
Sub-Type	Residential Attached
Style	2 Storey
Status	Active

Community Information

Address	2290 Glenridding Boulevard
Area	Edmonton
Subdivision	Glenridding Heights
City	Edmonton
County	ALBERTA
Province	AB
Postal Code	T6W 3P5

Amenities

Amenities	Ceiling 9 ft., Deck
Parking	Double Garage Detached

Interior

Interior Features	ensuite bathroom
Appliances	Air Conditioning-Central, Dishwasher-Built-In, Dryer, Garage Control, Garage Opener, Microwave Hood Fan, Refrigerator, Stove-Electric, Washer, Window Coverings
Heating	Forced Air-1, Natural Gas
Stories	2
Has Basement	Yes
Basement	Full, Unfinished

Exterior

Exterior	Wood, Stone, Vinyl
Exterior Features	Landscaped, Playground Nearby, Public Transportation, Shopping Nearby

Roof	Asphalt Shingles
Construction	Wood, Stone, Vinyl
Foundation	Concrete Perimeter

Additional Information

Date Listed	May 9th, 2025
Days on Market	1
Zoning	Zone 56

DATA IS DEEMED RELIABLE BUT IS NOT GUARANTEED ACCURATE BY THE REALTORS® ASSOCIATION OF EDMONTON. COPYRIGHT 2025 BY THE REALTORS® ASSOCIATION OF EDMONTON. ALL RIGHTS RESERVED.Trademarks are owned or controlled by the Canadian Real Estate Association (CREA) and identify real estate professionals who are members of CREA (REALTOR®, REALTORS®) and/or the quality of services they provide (MLS®, Multiple Listing Service®)

Listing information last updated on May 10th, 2025 at 3:02am MDT