

# \$514,900 - 7344 182 Avenue, Edmonton

MLS® #E4436139

## \$514,900

3 Bedroom, 2.50 Bathroom, 1,561 sqft  
Single Family on 0.00 Acres

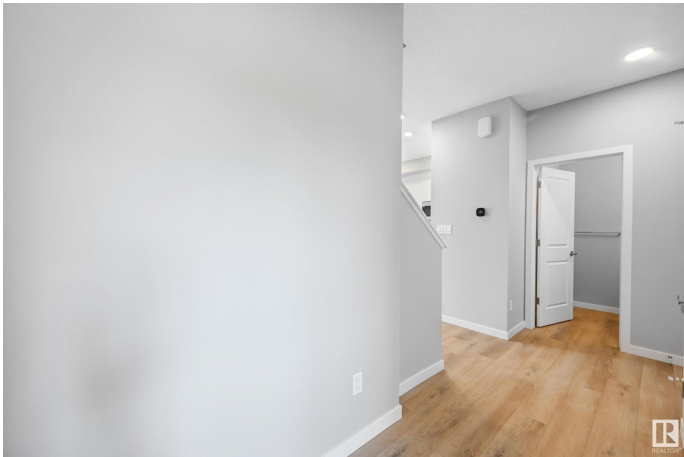
Crystallina Nera East, Edmonton, AB

Welcome to 7344 182 Avenue NW, a beautifully designed home by Excel Homes located in the family-friendly community of Crystallina Nera. This stylish two storey offers a functional layout with an open-concept main floor featuring a bright kitchen with a central island, a spacious great room, and convenient half bath. The upper level includes three bedrooms, a bonus room perfect for a home office or play space, a full laundry room, and a private primary suite complete with an ensuite and walk-in closet. With thoughtful details throughout, including an attached double garage and modern finishes, this home delivers comfort, style, and everyday convenience in one of Edmonton’s most desirable new neighbourhoods.

Built in 2025

### Essential Information

|                |           |
|----------------|-----------|
| MLS® #         | E4436139  |
| Price          | \$514,900 |
| Bedrooms       | 3         |
| Bathrooms      | 2.50      |
| Full Baths     | 2         |
| Half Baths     | 1         |
| Square Footage | 1,561     |
| Acres          | 0.00      |



|            |                        |
|------------|------------------------|
| Year Built | 2025                   |
| Type       | Single Family          |
| Sub-Type   | Detached Single Family |
| Style      | 2 Storey               |
| Status     | Active                 |

### Community Information

|             |                       |
|-------------|-----------------------|
| Address     | 7344 182 Avenue       |
| Area        | Edmonton              |
| Subdivision | Crystallina Nera East |
| City        | Edmonton              |
| County      | ALBERTA               |
| Province    | AB                    |
| Postal Code | T5Z 0L5               |

### Amenities

|                |                        |
|----------------|------------------------|
| Amenities      | See Remarks            |
| Parking Spaces | 4                      |
| Parking        | Double Garage Attached |

### Interior

|                   |  |
|-------------------|--|
| Interior Features | ensuite bathroom                                 |
| Appliances        | Dishwasher-Built-In, Dryer, Refrigerator, Washer |
| Heating           | Forced Air-1, Natural Gas                        |
| Stories           | 2  |
| Has Basement      | Yes  |
| Basement          | Full, Unfinished                                 |

### Exterior

|                   |  |
|-------------------|--|
| Exterior          | Wood, Vinyl  |
| Exterior Features | Public Transportation, Schools, Shopping Nearby, See Remarks |
| Roof              | Asphalt Shingles   |
| Construction      | Wood, Vinyl  |
| Foundation        | Concrete Perimeter   |

### School Information

|            |                          |
|------------|--------------------------|
| Elementary | Florence Hallock School  |
| Middle     | Florence Hallock School  |
| High       | M.E. LaZerte High School |

**Additional Information**

Date Listed                May 13th, 2025

Zoning                     Zone 28

DATA IS DEEMED RELIABLE BUT IS NOT GUARANTEED ACCURATE BY THE REALTORS® ASSOCIATION OF EDMONTON. COPYRIGHT 2025 BY THE REALTORS® ASSOCIATION OF EDMONTON. ALL RIGHTS RESERVED.Trademarks are owned or controlled by the Canadian Real Estate Association (CREA) and identify real estate professionals who are members of CREA (REALTOR®, REALTORS®) and/or the quality of services they provide (MLS®, Multiple Listing Service®)

Listing information last updated on May 13th, 2025 at 7:02pm MDT