

\$549,999 - 3935 31 Street, Edmonton

MLS® #E4438171

\$549,999

5 Bedroom, 3.50 Bathroom, 2,101 sqft
Single Family on 0.00 Acres

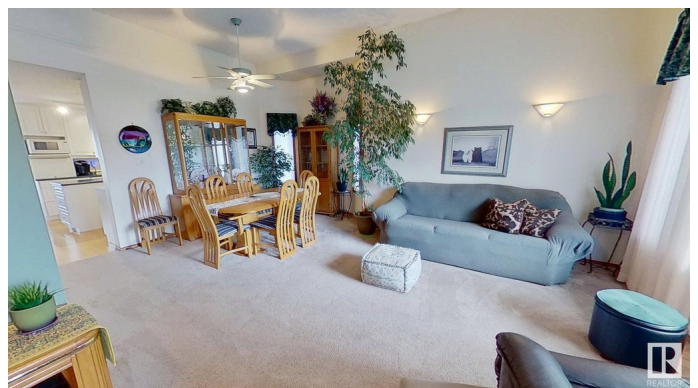
Larkspur, Edmonton, AB

This beautiful 2 storey located in a crescent in Larkspur begins with a front veranda and a large entry into the carpeted living and dining area with 11 foot ceilings. A large open kitchen and family room with hardwood floors and 42" wide stairwells to both up and downstairs. An impressive Heatilator fireplace with tile hearth and tall wooden mantle completes the family room. Upstairs is 2 bedrooms and a master bedroom with 4 pce ensuite. Downstairs you will find fully finished basement with 2 bedrooms, family room a 3 pce bathroom and lots of storage. Includes a 2 storey deck and 8 X 9 garden shed in the large fenced-in yard. Also boasts an oversize insulated heated garage with 11 foot ceilings. Recently upgraded: new shingles, new furnace, new AC, new hot water tank.

Built in 1993

Essential Information

MLS® #	E4438171
Price	\$549,999
Bedrooms	5
Bathrooms	3.50
Full Baths	3
Half Baths	1
Square Footage	2,101



Acres	0.00
Year Built	1993
Type	Single Family
Sub-Type	Detached Single Family
Style	2 Storey
Status	Active

Community Information

Address	3935 31 Street
Area	Edmonton
Subdivision	Larkspur
City	Edmonton
County	ALBERTA
Province	AB
Postal Code	T6T 1J6

Amenities

Amenities	Air Conditioner, Deck, Detectors Smoke, Exterior Walls- 2"x6", Hot Water Natural Gas, Hot Wtr Tank-Energy Star
Parking	2 Outdoor Stalls, Double Garage Attached, Heated, Insulated, Over Sized

Interior

Interior Features	ensuite bathroom
Appliances	Air Conditioning-Central, Dishwasher-Built-In, Dryer, Freezer, Garage Opener, Garburator, Hood Fan, Humidifier-Power(Furnace), Oven-Microwave, Refrigerator, Storage Shed, Stove-Electric, Vacuum Systems, Washer, Window Coverings
Heating	Forced Air-1, Natural Gas
Fireplace	Yes
Fireplaces	Direct Vent, Glass Door, Heatilator/Fan
Stories	3
Has Basement	Yes
Basement	Full, Finished

Exterior

Exterior	Wood, Stone, Vinyl
Exterior Features	Fenced, Fruit Trees/Shrubs, Landscaped, Schools, Shopping Nearby
Roof	Asphalt Shingles
Construction	Wood, Stone, Vinyl

Foundation Concrete Perimeter

Additional Information

Date Listed May 23rd, 2025

Days on Market 27

Zoning Zone 30

DATA IS DEEMED RELIABLE BUT IS NOT GUARANTEED ACCURATE BY THE REALTORS® ASSOCIATION OF EDMONTON. COPYRIGHT 2025 BY THE REALTORS® ASSOCIATION OF EDMONTON. ALL RIGHTS RESERVED.Trademarks are owned or controlled by the Canadian Real Estate Association (CREA) and identify real estate professionals who are members of CREA (REALTOR®, REALTORS®) and/or the quality of services they provide (MLS®, Multiple Listing Service®)

Listing information last updated on June 19th, 2025 at 1:02pm MDT