

# \$339,000 - 11020 108 Avenue, Edmonton

MLS® #E4441509

**\$339,000**

4 Bedroom, 3.50 Bathroom, 944 sqft  
Condo / Townhouse on 0.00 Acres

Queen Mary Park, Edmonton, AB

Welcome to this well-maintained 3+1 bedroom townhouse located in the heart of Edmonton! Upstairs features three spacious bedrooms, fresh paint and a bright, functional layout perfect for families or investors. The fully finished basement offers a separate entrance and includes a second kitchen, full bathroom, bedroom and its own laundry. Recent upgrades include a new high-efficiency furnace (2022), a 50-gal hot water tank (2023) new washer and dryer upstairs plus a washer/dryer combo in the basement (2024). With excellent value, modern updates, and income potential, this move-in-ready home is a smart investment opportunity!



Built in 2014

## Essential Information

MLS® #	E4441509
Price	\$339,000
Bedrooms	4
Bathrooms	3.50
Full Baths	3
Half Baths	1
Square Footage	944
Acres	0.00
Year Built	2014
Type	Condo / Townhouse

Sub-Type           Townhouse  
Style               2 Storey  
Status             Active

### Community Information

Address           11020 108 Avenue  
Area               Edmonton  
Subdivision       Queen Mary Park  
City               Edmonton  
County            ALBERTA  
Province          AB  
Postal Code       T5H 3G4

### Amenities

Amenities         No Animal Home, No Smoking  
Parking           Parking Pad Cement/Paved,

### Interior

Interior Features   ensuite bathroom  
Appliances         Dishwasher-Built-In, Dryer,  
Hood Fan, Window Coverings, Refrigerators-Two, Stoves-Two  
Heating            Forced Air-1, Natural Gas  
Stories             3  
Has Basement       Yes  
Basement           Full, Finished

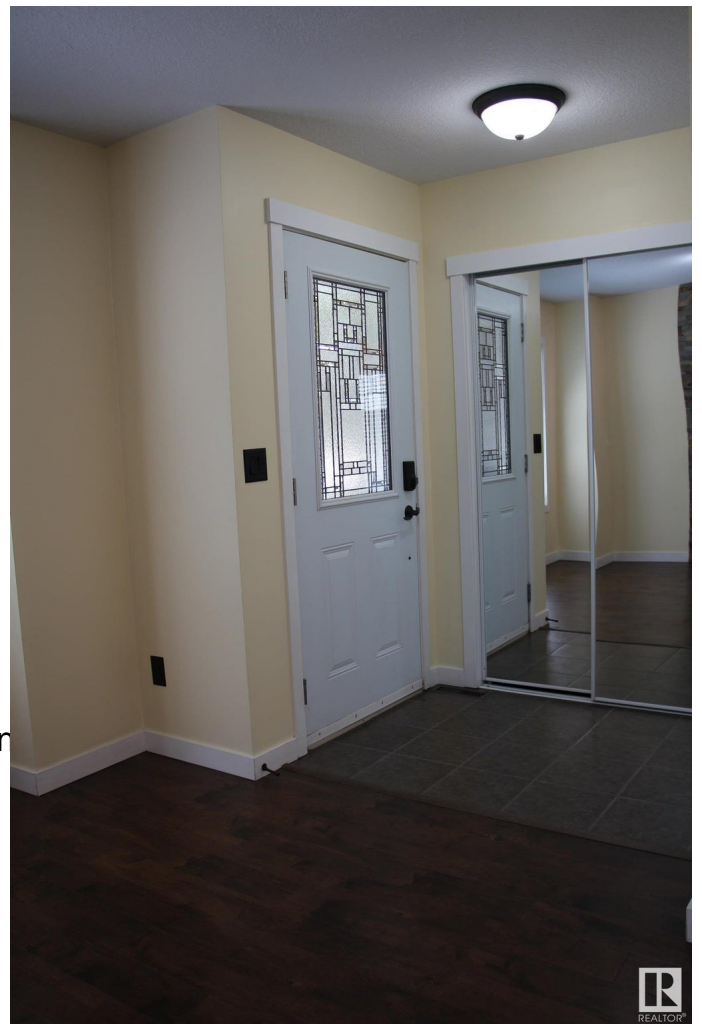
### Exterior

Exterior           Wood, Stone, Vinyl  
Exterior Features   Fenced, Low Maintenance Landscaping  
Roof                Asphalt Shingles  
Construction       Wood, Stone, Vinyl  
Foundation         Concrete Perimeter

### Additional Information

Date Listed         June 10th, 2025  
Days on Market     6  
Zoning              Zone 08  
Condo Fee           \$2,600

DATA IS DEEMED RELIABLE BUT IS NOT GUARANTEED ACCURATE BY THE REALTORS® ASSOCIATION OF



EDMONTON. COPYRIGHT 2025 BY THE REALTORS® ASSOCIATION OF EDMONTON. ALL RIGHTS RESERVED.Trademarks are owned or controlled by the Canadian Real Estate Association (CREA) and identify real estate professionals who are members of CREA (REALTOR®, REALTORS®) and/or the quality of services they provide (MLS®, Multiple Listing Service®)

Listing information last updated on June 16th, 2025 at 5:02pm MDT