

## \$359,900 - 10912 155 Street, Edmonton

MLS® #E4444368

**\$359,900**

3 Bedroom, 2.00 Bathroom, 1,041 sqft

Single Family on 0.00 Acres

High Park (Edmonton), Edmonton, AB

CALLING ALL DEVELOPERS....High Park is experiencing a lot of new residential development and here's an excellent infill opportunity for you! Rectangular 687m2 (49.87 ft x 147.9 ft) lot just down the street from High Park Playground. Being sold AS IS WHERE IS and lot value only.

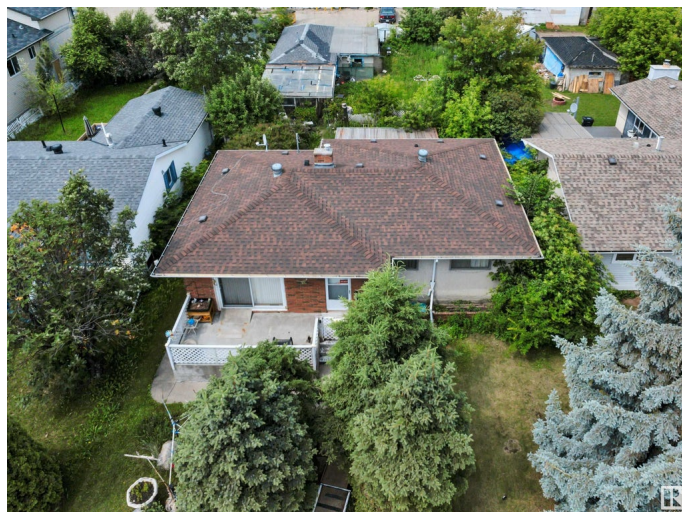
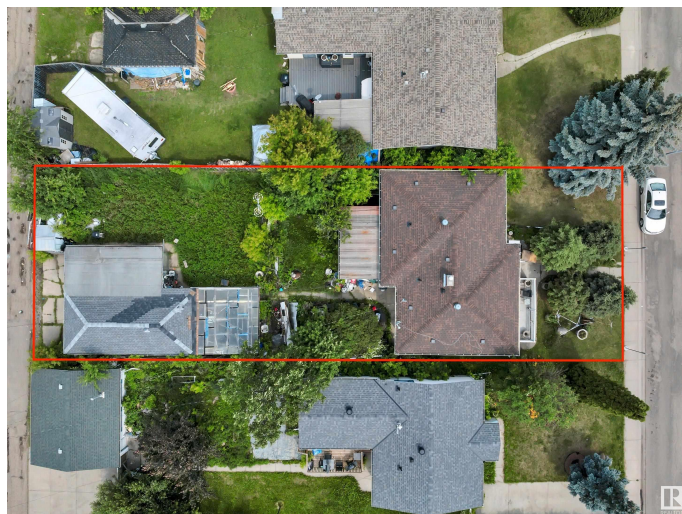
Built in 1958

### Essential Information

|                |                        |
|----------------|------------------------|
| MLS® #         | E4444368               |
| Price          | \$359,900              |
| Bedrooms       | 3                      |
| Bathrooms      | 2.00                   |
| Full Baths     | 2                      |
| Square Footage | 1,041                  |
| Acres          | 0.00                   |
| Year Built     | 1958                   |
| Type           | Single Family          |
| Sub-Type       | Detached Single Family |
| Style          | Bungalow               |
| Status         | Active                 |

### Community Information

|             |                      |
|-------------|----------------------|
| Address     | 10912 155 Street     |
| Area        | Edmonton             |
| Subdivision | High Park (Edmonton) |



|             |          |
|-------------|----------|
| City        | Edmonton |
| County      | ALBERTA  |
| Province    | AB       |
| Postal Code | T5P 2N1  |

### **Amenities**

|           |                        |
|-----------|------------------------|
| Amenities | Infill Property        |
| Parking   | Double Garage Detached |

### **Interior**

|              |   |
|--------------|---|
| Appliances   | Dryer, Freezer, Washer, Refrigerators-Two, Stoves-Two |
| Heating      | Forced Air-1, Natural Gas                             |
| Stories      | 2   |
| Has Basement | Yes   |
| Basement     | Full, Finished  |

### **Exterior**

|                   |   |
|-------------------|---|
| Exterior          | Wood, Brick   |
| Exterior Features | Back Lane, Flat Site, Public Transportation, Schools, Shopping Nearby |
| Roof              | Asphalt Shingles  |
| Construction      | Wood, Brick   |
| Foundation        | Concrete Perimeter  |

### **Additional Information**

|                |                 |
|----------------|-----------------|
| Date Listed    | June 26th, 2025 |
| Days on Market | 4               |
| Zoning         | Zone 21         |

DATA IS DEEMED RELIABLE BUT IS NOT GUARANTEED ACCURATE BY THE REALTORS® ASSOCIATION OF EDMONTON. COPYRIGHT 2025 BY THE REALTORS® ASSOCIATION OF EDMONTON. ALL RIGHTS RESERVED.Trademarks are owned or controlled by the Canadian Real Estate Association (CREA) and identify real estate professionals who are members of CREA (REALTOR®, REALTORS®) and/or the quality of services they provide (MLS®, Multiple Listing Service®)

Listing information last updated on June 30th, 2025 at 11:17am MDT