

\$444,900 - 14916 108 Avenue, Edmonton

MLS® #E4444543

\$444,900

3 Bedroom, 3.50 Bathroom, 1,044 sqft

Condo / Townhouse on 0.00 Acres

High Park (Edmonton), Edmonton, AB

Located in Edmonton's lovely High Park neighbourhood, this stylish 3 bed + 4 bath 2-storey townhouse offers comfort and convenience in every corner. Wake up and head to your sun-drenched kitchen, where light streams through the west-facing window. Coffee brews while you prep breakfast on generous counter space, surrounded by sleek stainless steel appliances and warm vinyl plank flooring. Spend your day in the open-concept main floor, perfect for hosting loved ones! Relax in your comfortable primary bedroom with a private ensuite and walk-in closet. An additional bedroom is great for family or office space. Head downstairs to a fully finished basement with a family room, a third bedroom and a full bathroom! Stay cool all summer with central A/C and enjoy peace of mind with a single detached garage. This thoughtfully designed townhouse is made for easy, elevated living. Close to schools, parks, shopping and amenities, don't miss your next chapter in High Park!

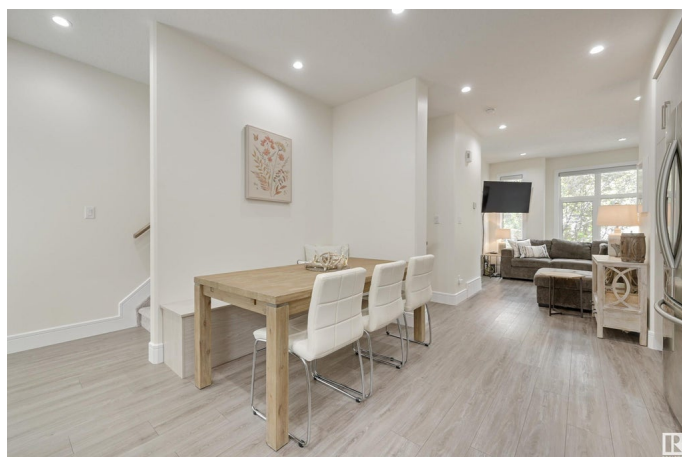
Built in 2017

Essential Information

MLS® # E4444543

Price \$444,900

Bedrooms 3



Bathrooms	3.50
Full Baths	3
Half Baths	1
Square Footage	1,044
Acres	0.00
Year Built	2017
Type	Condo / Townhouse
Sub-Type	Townhouse
Style	2 Storey
Status	Active

Community Information

Address	14916 108 Avenue
Area	Edmonton
Subdivision	High Park (Edmonton)
City	Edmonton
County	ALBERTA
Province	AB
Postal Code	T5P 1L8

Amenities

Amenities	Off Street Parking, On Street Parking, Air Conditioner, Front Porch, Hot Water Natural Gas, No Animal Home, No Smoking Home, Patio, Vinyl Windows, Infill Property
Parking	Single Garage Detached

Interior

Interior Features	ensuite bathroom
Appliances	Air Conditioning-Central, Dishwasher-Built-In, Dryer, Garage Control, Garage Opener, Microwave Hood Fan, Refrigerator, Stove-Electric, Washer, Window Coverings, TV Wall Mount
Heating	Forced Air-1, Natural Gas
Stories	3
Has Basement	Yes
Basement	Full, Finished

Exterior

Exterior	Wood, Stucco
Exterior Features	Picnic Area, Playground Nearby, Public Swimming Pool, Schools, Shopping Nearby

Roof	Asphalt Shingles
Construction	Wood, Stucco
Foundation	Concrete Perimeter

School Information

Elementary	Mayfield School
Middle	Britannia School
High	Ross Sheppard School

Additional Information

Date Listed	June 26th, 2025
Days on Market	5
Zoning	Zone 21

DATA IS DEEMED RELIABLE BUT IS NOT GUARANTEED ACCURATE BY THE REALTORS® ASSOCIATION OF EDMONTON. COPYRIGHT 2025 BY THE REALTORS® ASSOCIATION OF EDMONTON. ALL RIGHTS RESERVED. Trademarks are owned or controlled by the Canadian Real Estate Association (CREA) and identify real estate professionals who are members of CREA (REALTOR®, REALTORS®) and/or the quality of services they provide (MLS®, Multiple Listing Service®)

Listing information last updated on June 30th, 2025 at 11:17pm MDT