

\$149,900 - 222 12838 65 Street, Edmonton

MLS® #E4444684

\$149,900

2 Bedroom, 1.00 Bathroom, 805 sqft

Condo / Townhouse on 0.00 Acres

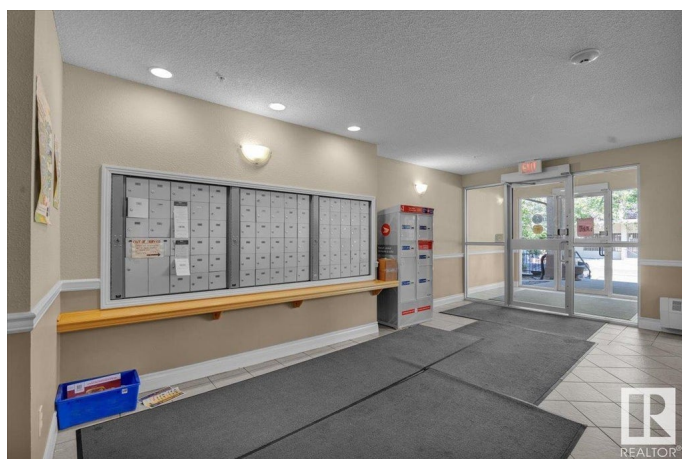
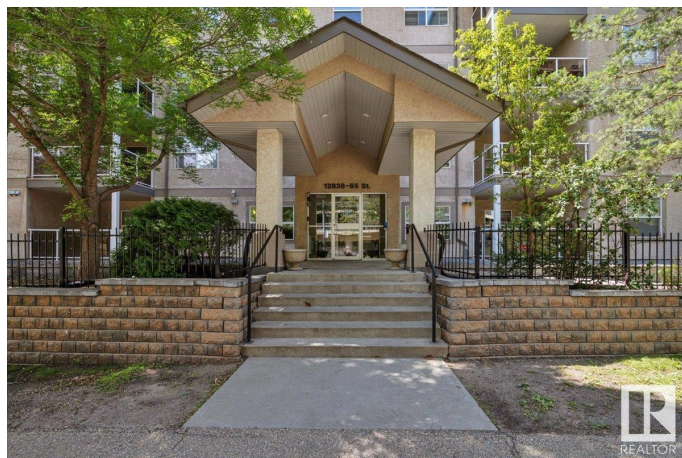
Belvedere, Edmonton, AB

This beautifully updated 2-bedroom condo in Belvedere offers modern living in a safe, well-maintained building. Featuring upgraded flooring, fresh paint, and a stylish kitchen with quartz countertops and stainless steel appliances, the space is both functional and inviting. The layout includes two generous bedrooms, a sleek bathroom, and a private balcony. Additional highlights include underground heated parking and access to an on-site gym. Conveniently located near the LRT, shopping, schools, and major roadways, ideal for first-time buyers, downsizers, or investors looking for a turnkey property.

Built in 2004

Essential Information

MLS® #	E4444684
Price	\$149,900
Bedrooms	2
Bathrooms	1.00
Full Baths	1
Square Footage	805
Acres	0.00
Year Built	2004
Type	Condo / Townhouse
Sub-Type	Lowrise Apartment
Style	Single Level Apartment



Status	Active
--------	--------

Community Information

Address	222 12838 65 Street
Area	Edmonton
Subdivision	Belvedere
City	Edmonton
County	ALBERTA
Province	AB
Postal Code	T5A 5H3

Amenities

Amenities	Carbon Monoxide Detectors, Exercise Room, No Animal Home, No Smoking Home, Parking-Visitor
Parking	Heated, Underground

Interior

Appliances	Dishwasher - Energy Star, Garage Opener, Microwave Hood Fan, Refrigerator, Stacked Washer/Dryer, Stove-Electric
Heating	Hot Water, Water
# of Stories	4
Stories	1
Has Basement	Yes
Basement	None, No Basement

Exterior

Exterior	Wood, Stucco
Exterior Features	Schools, Shopping Nearby
Roof	Asphalt Shingles
Construction	Wood, Stucco
Foundation	Concrete Perimeter

Additional Information

Date Listed	June 27th, 2025
Days on Market	63
Zoning	Zone 02
Condo Fee	\$524

DATA IS DEEMED RELIABLE BUT IS NOT GUARANTEED ACCURATE BY THE REALTORS® ASSOCIATION OF EDMONTON. COPYRIGHT 2025 BY THE REALTORS® ASSOCIATION OF EDMONTON. ALL RIGHTS RESERVED. Trademarks are owned or controlled by the Canadian Real Estate Association (CREA) and identify real

estate professionals who are members of CREA (REALTOR®®, REALTORS®®) and/or the quality of services they provide (MLS®®, Multiple Listing Service®®)

Listing information last updated on August 29th, 2025 at 4:32am MDT