

\$325,000 - 16519 115 Street, Edmonton

MLS® #E4444747

\$325,000

3 Bedroom, 1.50 Bathroom, 1,115 sqft
Single Family on 0.00 Acres

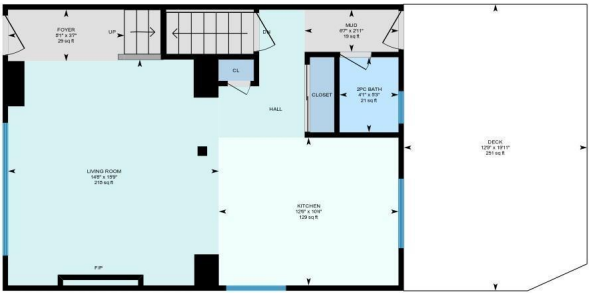
Dunluce, Edmonton, AB

Welcome to this Half Duplex located in the family community of Dunluce. Park out back on the pad or in the front on the street. Make your way inside to this nicely updated and freshly painted main floor with an open Kitchen with all white appliances, Dining and living room. Spacious front and back entrances with a 2-piece bathroom complete this level. Make your way upstairs where you will find new flooring and freshly painted 3 bedrooms and an updated 4-piece bathroom. In the basement you will find it partially finished that just needs some flooring and paint, a large storage, laundry and utility room. Spend your summers cool inside with Central A/C or in the massive back yard on the large deck. Close to the Henday, shopping, schools, public transit and rec center.



16519 115 St NW, Edmonton, AB

Main Floor Exterior Area 558.03 sq ft
Interior Area 522.03 sq ft



0 3 6 ft

PREPARED: 2025/06/27

White regions are excluded from total floor area in KSLIDE floor plans. All room dimensions and floor areas must be considered approximate and are subject to independent verification.

Built in 1979

Essential Information

MLS® #	E4444747
Price	\$325,000
Bedrooms	3
Bathrooms	1.50
Full Baths	1
Half Baths	1
Square Footage	1,115
Acres	0.00

Year Built	1979
Type	Single Family
Sub-Type	Half Duplex
Style	2 Storey
Status	Active

Community Information

Address	16519 115 Street
Area	Edmonton
Subdivision	Dunluce
City	Edmonton
County	ALBERTA
Province	AB
Postal Code	T5X 3V3

Amenities

Amenities	Air Conditioner, Deck, No Smoking Home, Vinyl Windows
Parking Spaces	2
Parking	2 Outdoor Stalls

Interior

Appliances	Air Conditioning-Central, Dishwasher-Built-In, Dryer, Fan-Ceiling, Microwave Hood Fan, Refrigerator, Storage Shed, Stove-Electric, Washer, Window Coverings, TV Wall Mount
Heating	Forced Air-1, Natural Gas
Fireplace	Yes
Fireplaces	Brick Facing, Mantel
Stories	3
Has Basement	Yes
Basement	Full, Finished

Exterior

Exterior	Wood, Metal
Exterior Features	Fenced, Flat Site, Golf Nearby, Playground Nearby, Public Transportation, Schools, Shopping Nearby
Roof	Asphalt Shingles
Construction	Wood, Metal
Foundation	Concrete Perimeter

Additional Information

Date Listed June 27th, 2025

Days on Market 4

Zoning Zone 27

DATA IS DEEMED RELIABLE BUT IS NOT GUARANTEED ACCURATE BY THE REALTORS® ASSOCIATION OF EDMONTON. COPYRIGHT 2025 BY THE REALTORS® ASSOCIATION OF EDMONTON. ALL RIGHTS RESERVED. Trademarks are owned or controlled by the Canadian Real Estate Association (CREA) and identify real estate professionals who are members of CREA (REALTOR®, REALTORS®) and/or the quality of services they provide (MLS®, Multiple Listing Service®)

Listing information last updated on July 1st, 2025 at 1:48pm MDT