

\$439,000 - 9015 135a Avenue, Edmonton

MLS® #E4444881

\$439,000

4 Bedroom, 2.00 Bathroom, 1,006 sqft
Single Family on 0.00 Acres

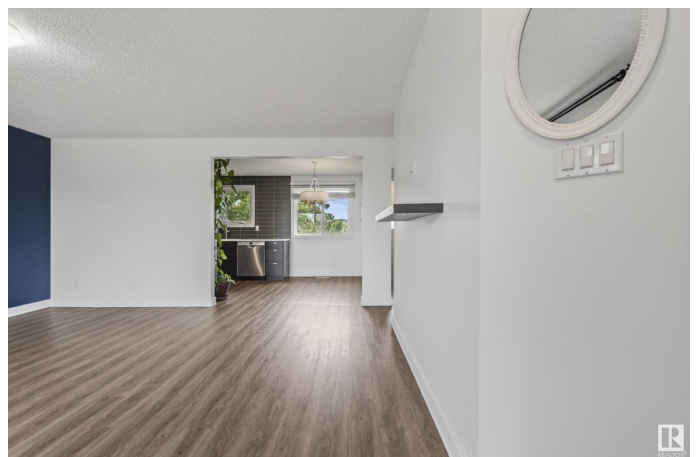
Glengarry, Edmonton, AB

South facing backyardâ€™extensively renovated throughout! This charming 4-bedroom bungalow has everything on your wish list. Freshly painted in modern colors, the main floor features upgraded laminate flooring that adds warmth to the bright, open-concept layout. The sleek kitchen boasts quartz countertops, new stainless steel appliances, double sink, pot & pan drawers, and soft-close cabinetry. Three bedrooms and a 4-piece porcelain-tiled bath complete the main level. The finished basement offers new carpeting, a huge rec room, 4th bedroom, 4-piece bath, and laundry with new front-loading washer and dryer. An oversized single garage complements the huge lot with a fence (2018). Additional updates include newer windows, doors, lighting, siding, furnace, newer hot water tank (2021), shingles (2018), front step (2022), plus floor and dishwasher replaced last year. Move-in ready with every detail thoughtfully cared for!

Built in 1962

Essential Information

MLS® #	E4444881
Price	\$439,000
Bedrooms	4
Bathrooms	2.00



Full Baths	2
Square Footage	1,006
Acres	0.00
Year Built	1962
Type	Single Family
Sub-Type	Detached Single Family
Style	Bungalow
Status	Active

Community Information

Address	9015 135a Avenue
Area	Edmonton
Subdivision	Glengarry
City	Edmonton
County	ALBERTA
Province	AB
Postal Code	T5E 1S2

Amenities

Amenities	See Remarks
Parking	Over Sized, Single Garage Detached

Interior

Appliances	Dishwasher-Built-In, Dryer, Garage Control, Hood Fan, Refrigerator, Stove-Electric, Washer
Heating	Forced Air-1, Natural Gas
Stories	2
Has Basement	Yes
Basement	Full, Finished

Exterior

Exterior	Wood, Vinyl
Exterior Features	Fenced, Park/Reserve, Playground Nearby, Public Transportation, Schools, Shopping Nearby
Roof	Asphalt Shingles
Construction	Wood, Vinyl
Foundation	Concrete Perimeter

Additional Information

Date Listed June 27th, 2025

Days on Market 17

Zoning Zone 02

DATA IS DEEMED RELIABLE BUT IS NOT GUARANTEED ACCURATE BY THE REALTORS® ASSOCIATION OF EDMONTON. COPYRIGHT 2025 BY THE REALTORS® ASSOCIATION OF EDMONTON. ALL RIGHTS RESERVED. Trademarks are owned or controlled by the Canadian Real Estate Association (CREA) and identify real estate professionals who are members of CREA (REALTOR®, REALTORS®) and/or the quality of services they provide (MLS®, Multiple Listing Service®)

Listing information last updated on July 14th, 2025 at 1:02pm MDT