

## \$499,800 - 608 Beck Close, Edmonton

MLS® #E4445049

**\$499,800**

3 Bedroom, 3.00 Bathroom, 1,546 sqft

Single Family on 0.00 Acres

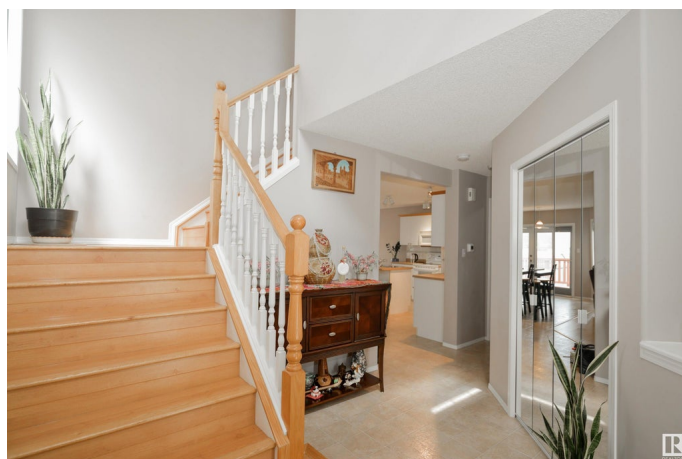
Blackmud Creek, Edmonton, AB

Immaculately maintained. This home is conveniently located just off Ellerslie Rd and just a few mins to the Henday. As you enter the home, you'll notice the high ceilings in the foyer and a little decorative nook. The main floor features corner pantry in the kitchen with an eat up island, corner gas fireplace, & main floor laundry. Upstairs, you'll find a large primary bedroom with a 4pc ensuite, a water closet & walk-in closet & 2 additional good sized bedrooms. Upgrades include furnace, HWT, & flooring and driveway. The basement is fully finished with large rec room along with a 2pc bath. With excellent grading all around, this home is solid & move in ready.

Built in 2001

### Essential Information

MLS® #	E4445049
Price	\$499,800
Bedrooms	3
Bathrooms	3.00
Full Baths	2
Half Baths	2
Square Footage	1,546
Acres	0.00
Year Built	2001
Type	Single Family



Sub-Type	Detached Single Family
Style	2 Storey
Status	Active

### Community Information

Address	608 Beck Close
Area	Edmonton
Subdivision	Blackmud Creek
City	Edmonton
County	ALBERTA
Province	AB
Postal Code	T6J 6X2

### Amenities

Amenities	Deck, No Animal Home, No Smoking Home, Vinyl Windows
Parking	Double Garage Attached

### Interior

Interior Features	ensuite bathroom
Appliances	Dishwasher-Built-In, Dryer, Freezer, Microwave Hood Fan, Refrigerator, Stove-Electric, Washer
Heating	Forced Air-1, Natural Gas
Stories	3
Has Basement	Yes
Basement	Full, Finished

### Exterior

Exterior	Wood, Brick, Vinyl
Exterior Features	Cul-De-Sac
Roof	Asphalt Shingles
Construction	Wood, Brick, Vinyl
Foundation	Concrete Perimeter

### School Information

Elementary	Roberta Macadams
Middle	DS Mackenzie
High	Dr. Anne Anderson

### Additional Information

Date Listed	June 30th, 2025
-------------	-----------------

Days on Market 17

Zoning Zone 55

DATA IS DEEMED RELIABLE BUT IS NOT GUARANTEED ACCURATE BY THE REALTORS® ASSOCIATION OF EDMONTON. COPYRIGHT 2025 BY THE REALTORS® ASSOCIATION OF EDMONTON. ALL RIGHTS RESERVED. Trademarks are owned or controlled by the Canadian Real Estate Association (CREA) and identify real estate professionals who are members of CREA (REALTOR®, REALTORS®) and/or the quality of services they provide (MLS®, Multiple Listing Service®)

Listing information last updated on July 16th, 2025 at 10:47pm MDT