

## \$589,999 - 900 10180 103 Street, Edmonton

MLS® #E4445662

**\$589,999**

2 Bedroom, 2.00 Bathroom, 1,354 sqft

Condo / Townhouse on 0.00 Acres

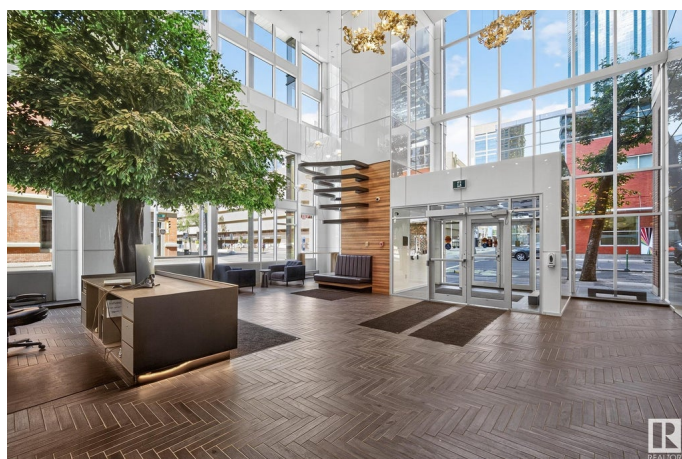
Downtown (Edmonton), Edmonton, AB

Experience luxury condo living at The Encore Tower – Edmonton’s premier high-rise address! This sleek and modern 9th-floor unit offers 180° views of the downtown skyline through stunning floor-to-ceiling windows. Designed for upscale urban lifestyles, it features 2 bedrooms, 2 full baths, a chef’s kitchen with quartz countertops & stainless steel appliances, and 2 private balconies. The spacious primary suite boasts a lavish 5-piece en suite and custom California Closets wardrobe. Enjoy top-tier amenities including a social lounge, fitness centre, outdoor patio, and secure underground titled parking. Ideal for professionals, downsizers, or those seeking elevated city living located just steps from Edmonton’s thriving Ice District, Roger’s Place Arena, downtown’s finest restaurants, and top amenities – this is downtown living at its finest!

Built in 2020

### Essential Information

MLS® #	E4445662
Price	\$589,999
Bedrooms	2
Bathrooms	2.00
Full Baths	2
Square Footage	1,354



Acres	0.00
Year Built	2020
Type	Condo / Townhouse
Sub-Type	Apartment High Rise
Style	Single Level Apartment
Status	Active

### Community Information

Address	900 10180 103 Street
Area	Edmonton
Subdivision	Downtown (Edmonton)
City	Edmonton
County	ALBERTA
Province	AB
Postal Code	T5J 0L1

### Amenities

Amenities	Air Conditioner, Ceiling 9 ft., Exercise Room, Hot Tub, Social Rooms, Concierge Service
Parking Spaces	1
Parking	Heated, Parkade, Underground

### Interior

Interior Features	ensuite bathroom
Appliances	Dryer, Microwave Hood Fan, Refrigerator, Stove-Electric, Washer, Window Coverings
Heating	Heat Pump, Natural Gas
# of Stories	43
Stories	1
Has Basement	Yes
Basement	None, No Basement

### Exterior

Exterior	Concrete, Brick, Metal
Exterior Features	Golf Nearby, Public Transportation, Schools, Shopping Nearby, View City, View Downtown
Roof	EPDM Membrane
Construction	Concrete, Brick, Metal
Foundation	Concrete Perimeter

**Additional Information**

Date Listed	July 2nd, 2025
Days on Market	57
Zoning	Zone 12
Condo Fee	\$1,080

DATA IS DEEMED RELIABLE BUT IS NOT GUARANTEED ACCURATE BY THE REALTORS® ASSOCIATION OF EDMONTON. COPYRIGHT 2025 BY THE REALTORS® ASSOCIATION OF EDMONTON. ALL RIGHTS RESERVED.Trademarks are owned or controlled by the Canadian Real Estate Association (CREA) and identify real estate professionals who are members of CREA (REALTOR®, REALTORS®) and/or the quality of services they provide (MLS®, Multiple Listing Service®)

Listing information last updated on August 28th, 2025 at 4:33pm MDT