

\$163,000 - 151 10520 120 Street, Edmonton

MLS® #E4446395

\$163,000

2 Bedroom, 1.00 Bathroom, 793 sqft

Condo / Townhouse on 0.00 Acres

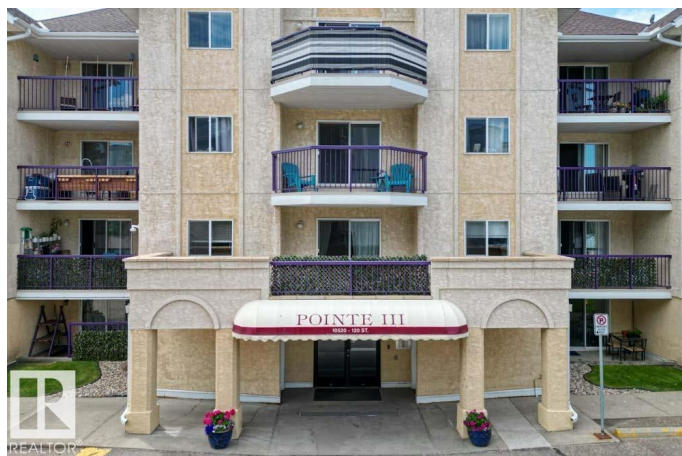
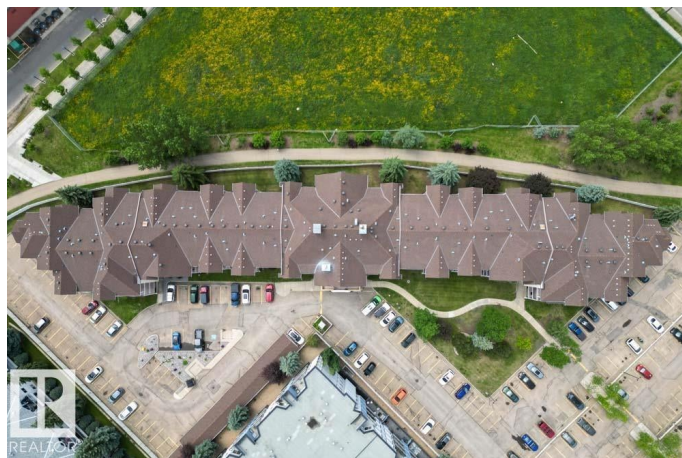
Queen Mary Park, Edmonton, AB

Enjoy QUIET living in the desirable community of QUEEN MARY PARK! Through the FOYER, the flowing space is centered around the DINING AREA adjoining the BRIGHT KITCHEN with AMPLE CABINETRY. The LIVING ROOM smartly splits the PRIMARY BEDROOM with generous footprint, DOUBLE CLOSET and a LARGE WINDOW, next to the UPDATED + STYLISH 4PC BATH, from the amply-sized 2ND BEDROOM. Enjoy the ALL-SEASON, SEMI-PRIVATE PATIO, IN-SUITE LAUNDRY, STORAGE ROOM, and ASSIGNED PARKING. This is a perfect fit for anyone looking to be in one of Edmonton's most walkable neighborhoods, near the Loblaws City Market + the Brewery District.

Built in 1994

Essential Information

MLS® #	E4446395
Price	\$163,000
Bedrooms	2
Bathrooms	1.00
Full Baths	1
Square Footage	793
Acres	0.00
Year Built	1994



Type	Condo / Townhouse
Sub-Type	Lowrise Apartment
Style	Single Level Apartment
Status	Active

Community Information

Address	151 10520 120 Street
Area	Edmonton
Subdivision	Queen Mary Park
City	Edmonton
County	ALBERTA
Province	AB
Postal Code	T5H 4L9

Amenities

Amenities	Deck, Detectors Smoke, Parking-Visitor, Storage-In-Suite
Parking	Stall

Interior

Appliances	Dishwasher-Built-In, Refrigerator, Stacked Washer/Dryer, Stove-Electric
Heating	Baseboard, Hot Water, Natural Gas
# of Stories	4
Stories	1
Has Basement	Yes
Basement	None, No Basement

Exterior

Exterior	Wood, Stucco
Exterior Features	Backs Onto Park/Trees, Playground Nearby, Public Transportation, Schools, Shopping Nearby, See Remarks
Roof	Asphalt Shingles
Construction	Wood, Stucco
Foundation	Concrete Perimeter

Additional Information

Date Listed	July 7th, 2025
Days on Market	54
Zoning	Zone 08
Condo Fee	\$402

DATA IS DEEMED RELIABLE BUT IS NOT GUARANTEED ACCURATE BY THE REALTORS® ASSOCIATION OF EDMONTON. COPYRIGHT 2025 BY THE REALTORS® ASSOCIATION OF EDMONTON. ALL RIGHTS RESERVED.Trademarks are owned or controlled by the Canadian Real Estate Association (CREA) and identify real estate professionals who are members of CREA (REALTOR®, REALTORS®) and/or the quality of services they provide (MLS®, Multiple Listing Service®)

Listing information last updated on August 30th, 2025 at 8:32am MDT