

\$399,000 - 11624 110a Avenue, Edmonton

MLS® #E4446434

\$399,000

3 Bedroom, 2.00 Bathroom, 1,322 sqft

Single Family on 0.00 Acres

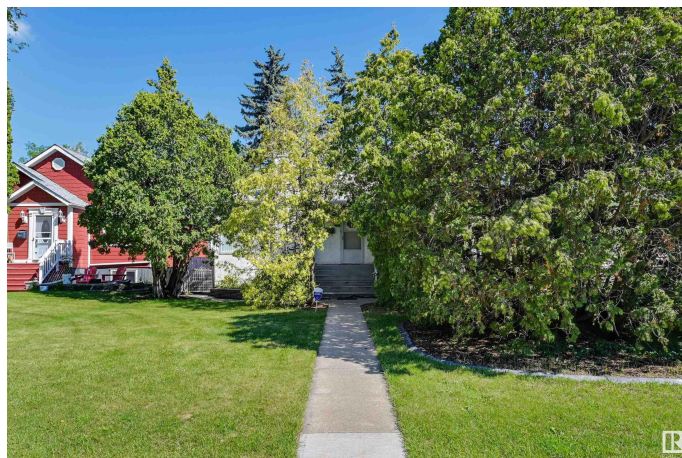
Queen Mary Park, Edmonton, AB

Charming and Unique Home in Queen Mary Park! Welcome to this one-of-a-kind gem nestled in the heart of Queen Mary Park. Full of character and charm, this beautifully maintained home features an open-concept layout that seamlessly connects the kitchen, dining area, and family room—ideal for both entertaining and everyday living. You will love the custom stone detailing around the cozy fireplace, adding a touch of rustic elegance to the main floor. The main level offers two comfortable bedrooms, while the fully finished basement includes a third bedroom and a second kitchen—perfect for extended family, guests, or potential suite potential. With its distinctive style, warm ambiance, and prime location close to schools, parks, shopping, and transit, this home truly has it all. Don't miss your chance to own a truly unique property in one of Edmonton's most established neighborhoods!

Built in 1951

Essential Information

MLS® #	E4446434
Price	\$399,000
Bedrooms	3
Bathrooms	2.00
Full Baths	2



Square Footage	1,322
Acres	0.00
Year Built	1951
Type	Single Family
Sub-Type	Detached Single Family
Style	Bungalow
Status	Active

Community Information

Address	11624 110a Avenue
Area	Edmonton
Subdivision	Queen Mary Park
City	Edmonton
County	ALBERTA
Province	AB
Postal Code	T5H 1K6

Amenities

Amenities	Bar, Closet Organizers, Deck, Security Window Bars, Wet Bar
Parking	Single Garage Detached

Interior

Appliances	Dishwasher-Built-In, Dryer, Garage Control, Garage Opener, Hood Fan, Washer, Refrigerators-Two, Stoves-Two
Heating	Forced Air-1, Natural Gas
Fireplace	Yes
Fireplaces	Brick Facing
Stories	2
Has Basement	Yes
Basement	Full, Finished

Exterior

Exterior	Wood, Stucco
Exterior Features	Back Lane, Fenced, Fruit Trees/Shrubs, Landscaped, Paved Lane, Playground Nearby, Schools, Shopping Nearby
Roof	Asphalt Shingles
Construction	Wood, Stucco
Foundation	Concrete Perimeter

Additional Information

Date Listed July 8th, 2025

Days on Market 4

Zoning Zone 08

DATA IS DEEMED RELIABLE BUT IS NOT GUARANTEED ACCURATE BY THE REALTORS® ASSOCIATION OF EDMONTON. COPYRIGHT 2025 BY THE REALTORS® ASSOCIATION OF EDMONTON. ALL RIGHTS RESERVED. Trademarks are owned or controlled by the Canadian Real Estate Association (CREA) and identify real estate professionals who are members of CREA (REALTOR®, REALTORS®) and/or the quality of services they provide (MLS®, Multiple Listing Service®)

Listing information last updated on July 11th, 2025 at 11:02pm MDT