

\$528,888 - 15112 48 Street, Edmonton

MLS® #E4447456

\$528,888

5 Bedroom, 3.00 Bathroom, 1,444 sqft
Single Family on 0.00 Acres

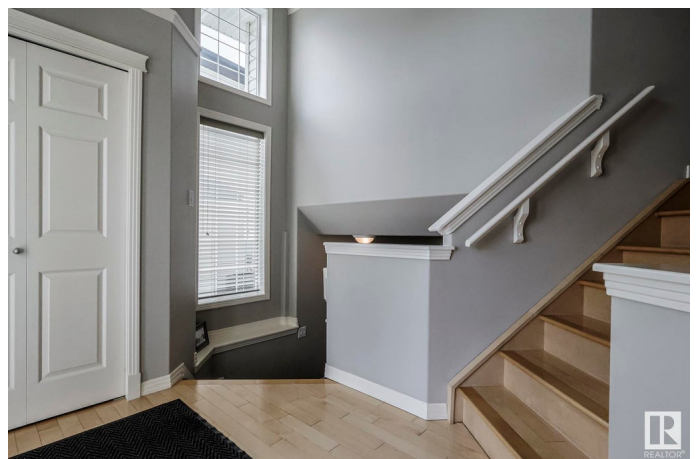
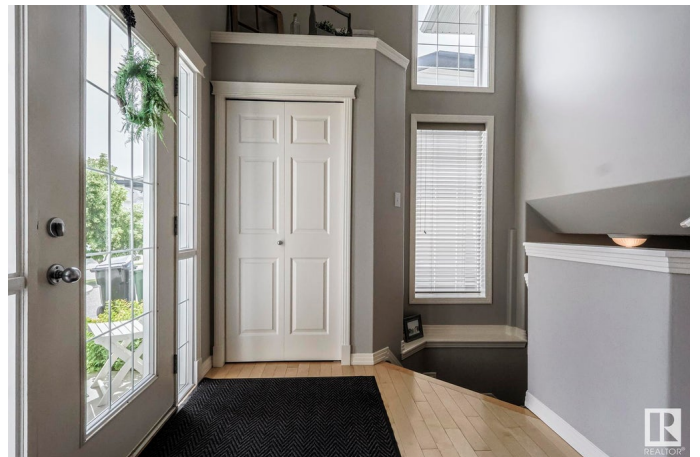
Miller, Edmonton, AB

MUST SEE IN MILLER!..Backing onto the Park, this Bi-level boasts 3+2beds, 3full baths, a bright open concept kitchen/living room & over 2400sqft of living space. Picture yourself basking in your fully fenced, west facing back yard with Pergola covered Deck, leading to the lower, Brick Patio revealing a private R/I hot tub niche, all making for an Excellent Extension of living space. Additional highlights include, a centre island w/breakfast bar, QUARTZ counter tops(kitchen & ensuite), corner pantry & Gas Stove. The 'King-sized' Primary bedroom is completed by a walk-in closet w/organizer & 4pce Ensuite. The fully finished basement has 2beds, a 4pce bath & Bright Rec Room w/built in desk (great for computer station or arts/crafts). Adding even more value is the Gas Fireplace w/mantel, Newer Roof(2019), Newer HWT(2019), Vinyl Windows, Attached Double Garage & R/I Water Fountain in front yard. Close Proximity to schools, shopping, restaurants along w/easy access to the Henday all ensures a Sound Investment!

Built in 2001

Essential Information

MLS® #	E4447456
Price	\$528,888



Bedrooms	5
Bathrooms	3.00
Full Baths	3
Square Footage	1,444
Acres	0.00
Year Built	2001
Type	Single Family
Sub-Type	Detached Single Family
Style	Bi-Level
Status	Active

Community Information

Address	15112 48 Street
Area	Edmonton
Subdivision	Miller
City	Edmonton
County	ALBERTA
Province	AB
Postal Code	T5Y 3A2

Amenities

Amenities	On Street Parking, Deck, No Smoking Home, Patio, Vaulted Ceiling, Vinyl Windows, See Remarks
Parking Spaces	4
Parking	Double Garage Attached

Interior

Interior Features	ensuite bathroom
Appliances	Dishwasher-Built-In, Dryer, Hood Fan, Refrigerator, Stove-Gas, Washer, Window Coverings
Heating	Forced Air-1, Natural Gas
Fireplace	Yes
Fireplaces	Mantel, Tile Surround
Stories	3
Has Basement	Yes
Basement	Full, Finished

Exterior

Exterior	Wood, Vinyl
----------	-------------

Exterior Features	Backs Onto Park/Trees, Fenced, Landscaped, Playground Nearby, Public Transportation, Schools, Shopping Nearby, See Remarks
Roof	Asphalt Shingles
Construction	Wood, Vinyl
Foundation	Concrete Perimeter

Additional Information

Date Listed	July 12th, 2025
Zoning	Zone 02

DATA IS DEEMED RELIABLE BUT IS NOT GUARANTEED ACCURATE BY THE REALTORS® ASSOCIATION OF EDMONTON. COPYRIGHT 2025 BY THE REALTORS® ASSOCIATION OF EDMONTON. ALL RIGHTS RESERVED.Trademarks are owned or controlled by the Canadian Real Estate Association (CREA) and identify real estate professionals who are members of CREA (REALTOR®, REALTORS®) and/or the quality of services they provide (MLS®, Multiple Listing Service®)

Listing information last updated on July 12th, 2025 at 7:47pm MDT