

\$274,900 - 90 Forest Grove, St. Albert

MLS® #E4448328

\$274,900

3 Bedroom, 2.00 Bathroom, 1,190 sqft
Condo / Townhouse on 0.00 Acres

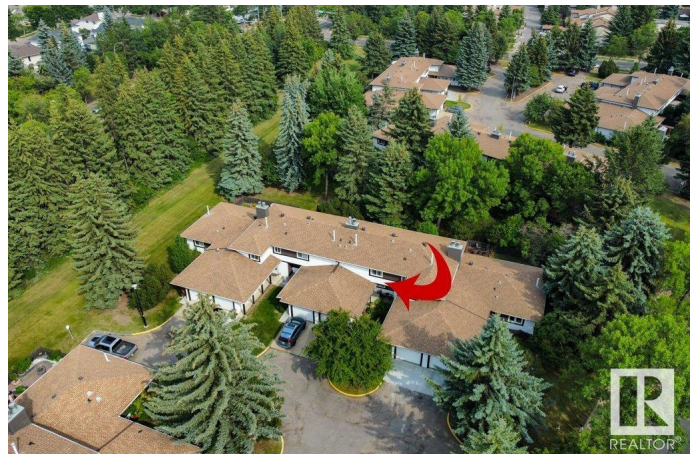
Forest Lawn (St. Albert), St. Albert, AB

Welcome to this 1189 sq ft 2 storey townhouse BACKING TREES and located in the quiet, well-maintained complex of Forest Grove. The main floor features a functional kitchen with stainless steel appliances, opening into a spacious living and dining area. A charming corner wood-burning fireplace adds warmth and character to the space. A convenient 2-piece bathroom completes the main level. Upstairs, the primary bedroom offers its own private 2-piece ensuite, along with two additional bedrooms and a full 4-piece bathroom. The fully finished basement includes a generous family room and ample storage. Enjoy the convenience of a single attached garage and the tranquility of a private backyard that backs onto greenspace, surrounded by mature trees. Ideally situated close to schools, parks, shopping, and other amenities, this home offers a great opportunity for families, first-time buyers, or anyone looking for a comfortable and well-located property.

Built in 1979

Essential Information

MLS® #	E4448328
Price	\$274,900
Bedrooms	3



Bathrooms	2.00
Full Baths	1
Half Baths	2
Square Footage	1,190
Acres	0.00
Year Built	1979
Type	Condo / Townhouse
Sub-Type	Townhouse
Style	2 Storey
Status	Active

Community Information

Address	90 Forest Grove
Area	St. Albert
Subdivision	Forest Lawn (St. Albert)
City	St. Albert
County	ALBERTA
Province	AB
Postal Code	T8N 3K6

Amenities

Amenities	Front Porch, Parking-Visitor, Patio, See Remarks
Parking	Single Garage Attached

Interior

Interior Features	ensuite bathroom
Appliances	Dishwasher-Built-In, Dryer, Hood Fan, Oven-Microwave, Refrigerator, Stove-Electric, Washer, Window Coverings, See Remarks
Heating	Forced Air-1, Natural Gas
Fireplace	Yes
Fireplaces	Mantel
Stories	2
Has Basement	Yes
Basement	Full, Finished

Exterior

Exterior	Wood, Stucco
Exterior Features	Fenced, Golf Nearby, Landscaped, Playground Nearby, Public Transportation, Schools, Shopping Nearby, See Remarks

Roof	Asphalt Shingles
Construction	Wood, Stucco
Foundation	Concrete Perimeter

Additional Information

Date Listed	July 17th, 2025
Days on Market	2
Zoning	Zone 24
Condo Fee	\$514

DATA IS DEEMED RELIABLE BUT IS NOT GUARANTEED ACCURATE BY THE REALTORS® ASSOCIATION OF EDMONTON. COPYRIGHT 2025 BY THE REALTORS® ASSOCIATION OF EDMONTON. ALL RIGHTS RESERVED.Trademarks are owned or controlled by the Canadian Real Estate Association (CREA) and identify real estate professionals who are members of CREA (REALTOR®, REALTORS®) and/or the quality of services they provide (MLS®, Multiple Listing Service®)

Listing information last updated on July 19th, 2025 at 11:17am MDT