

# \$1,620 - 306 11820 22, Edmonton

MLS® #E4450386

**\$1,620**

2 Bedroom, 2.00 Bathroom, 850 sqft

Rental on 0.00 Acres

Rutherford (Edmonton), Edmonton, AB

Discover a modern living experience in the renovated apartment featuring vinyl plank flooring and in-suite laundry. It includes 2 bedrooms with Den and 2 full bathrooms. You can move in September 1st. Rent is \$1620 + Electricity. Enjoy convenient underground parking and including enclosed storage. This south-facing unit offers plenty of natural light.

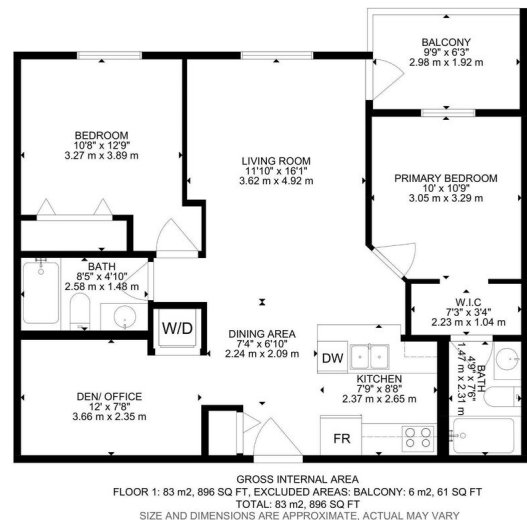
Built in 2011

## Essential Information

MLS® #	E4450386
Price	\$1,620
Bedrooms	2
Bathrooms	2.00
Full Baths	2
Square Footage	850
Acres	0.00
Year Built	2011
Type	Rental
Style	Single Level Apartment
Status	Active

## Community Information

Address	306 11820 22
Area	Edmonton
Subdivision	Rutherford (Edmonton)



City	Edmonton
County	ALBERTA
Province	AB
Postal Code	T6W 2A2

### **Amenities**

Parking	Parkade
---------	---------

### **Interior**

Appliances	Dishwasher-Built-In, Garage Opener, Microwave Hood Fan, Refrigerator, Stacked Washer/Dryer, Stove-Electric
------------	--

### **Additional Information**

Date Listed	July 30th, 2025
-------------	-----------------

Days on Market	2
----------------	---

Zoning	Zone 55
--------	---------

DATA IS DEEMED RELIABLE BUT IS NOT GUARANTEED ACCURATE BY THE REALTORS® ASSOCIATION OF EDMONTON. COPYRIGHT 2025 BY THE REALTORS® ASSOCIATION OF EDMONTON. ALL RIGHTS RESERVED. Trademarks are owned or controlled by the Canadian Real Estate Association (CREA) and identify real estate professionals who are members of CREA (REALTOR®, REALTORS®) and/or the quality of services they provide (MLS®, Multiple Listing Service®)

Listing information last updated on August 1st, 2025 at 8:32am MDT