

Courtesy Of Terrie M Reekie Of RE/MAX River City

## **\$495,800 - 2511 20 Avenue, Edmonton**

MLS® #E4453382

**\$495,800**

3 Bedroom, 2.50 Bathroom, 1,572 sqft

Single Family on 0.00 Acres

Laurel, Edmonton, AB

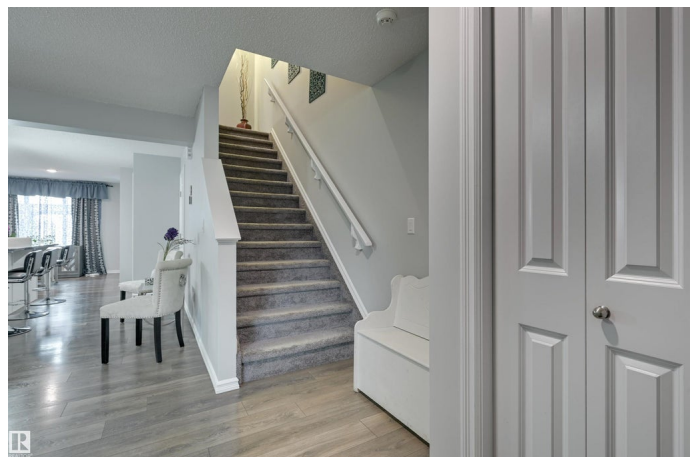
Discover this pristine and beautifully designed 3-bed/3 bth two-storey home in the vibrant SE community of Laurel. With its clean interior, modern finishes, and stylish aesthetic, this home offers a bright and welcoming atmosphere. The open main floor offers a large central kitchen with stone counters, an entertaining-sized living room, spacious dining, and a 2-pc bath. Retreat upstairs to a private primary bedroom, with a walk-in closet and a 5-pce ensuite, an additional 2 bedrooms, 4-pce bath, and laundry complete the upper floor. The basement is an open canvas with rough-in plumbing. Besides the great curb appeal, you'll enjoy the convenience of Tankless HWT, and a Double Garage. Summer evenings beckon in the beautifully landscaped, fenced yard, relax on the large deck, or in the gazebo. Located just minutes from schools, grocery stores, public transit, and other essential amenities. Enjoy the community with walking trails, ponds, parks, and amenities mere minutes away on foot. A place to call home!

Built in 2015

### **Essential Information**

MLS® # E4453382

Price \$495,800



Bedrooms	3
Bathrooms	2.50
Full Baths	2
Half Baths	1
Square Footage	1,572
Acres	0.00
Year Built	2015
Type	Single Family
Sub-Type	Detached Single Family
Style	2 Storey
Status	Active

### Community Information

Address	2511 20 Avenue
Area	Edmonton
Subdivision	Laurel
City	Edmonton
County	ALBERTA
Province	AB
Postal Code	T6T 0Y7

### Amenities

Amenities	Deck
Parking Spaces	2
Parking	Double Garage Detached

### Interior

Interior Features	ensuite bathroom
Appliances	Dishwasher-Built-In, Dryer, Garage Control, Garage Opener, Microwave Hood Fan, Refrigerator, Stove-Electric, Washer, See Remarks
Heating	Forced Air-1, Natural Gas
Stories	2
Has Basement	Yes
Basement	Full, Unfinished

### Exterior

Exterior	Wood, Vinyl
Exterior Features	Back Lane, Fenced, Landscaped, Park/Reserve, Playground Nearby, Public Transportation, Schools, Shopping Nearby

Roof	Asphalt Shingles
Construction	Wood, Vinyl
Foundation	Concrete Perimeter

**Additional Information**

Date Listed	August 15th, 2025
Days on Market	2
Zoning	Zone 30

DATA IS DEEMED RELIABLE BUT IS NOT GUARANTEED ACCURATE BY THE REALTORS® ASSOCIATION OF EDMONTON. COPYRIGHT 2025 BY THE REALTORS® ASSOCIATION OF EDMONTON. ALL RIGHTS RESERVED.Trademarks are owned or controlled by the Canadian Real Estate Association (CREA) and identify real estate professionals who are members of CREA (REALTOR®, REALTORS®) and/or the quality of services they provide (MLS®, Multiple Listing Service®)

Listing information last updated on August 17th, 2025 at 9:18am MDT