

Courtesy Of Sam Killick Of ARIVL

# \$219,000 - 215 10309 107 Street, Edmonton

MLS® #E4454897

**\$219,000**

1 Bedroom, 1.00 Bathroom, 746 sqft  
Condo / Townhouse on 0.00 Acres

Downtown (Edmonton), Edmonton, AB

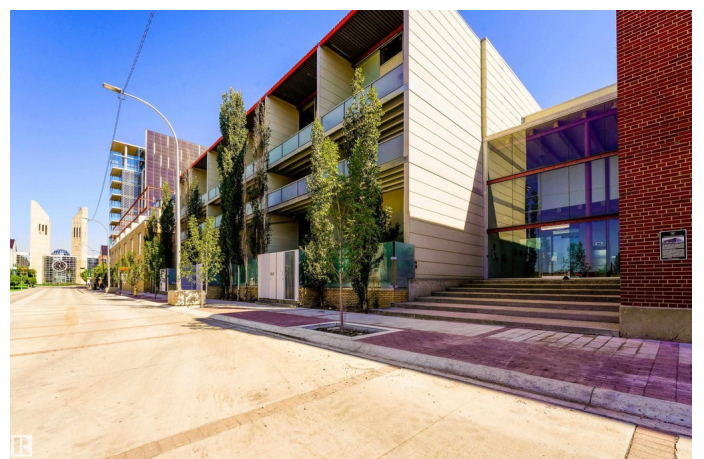
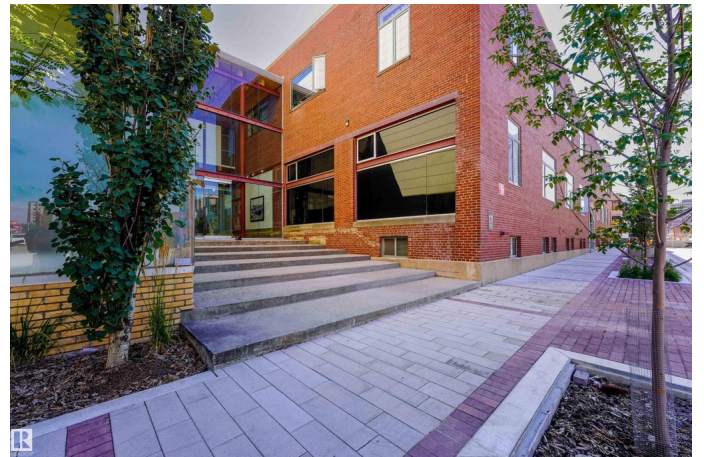
## SHORT-TERM FRIENDLY LOFT LIVING IN THE ICONIC SEVENTH STREET LOFTS!

Discover unbeatable value in this 1-bed gem, set in the historic 1929 John Deere Warehouse by DUB Architects™ where industrial character meets modern style. Perfect for AirBnB or short-term rental buyers, this unique space features massive windows, soaring timber ceilings, a skylight above the bedroom, open kitchen, and plenty of storage. Recent updates include fresh paint, new window coverings & newly refinished original hardwood floors, blending old-world charm with modern comfort. Parking is just steps from your back door, making city living effortless. Located in the heart of the Downtown Warehouse District, you™re only moments from the Ice District, MacEwan University, Jasper Ave & the future Norquest LRT stop. Whether you™re an investor or looking for an inspiring urban home, this loft delivers unbeatable location, income potential & lifestyle. Take a look today & get ready to move right in!

Built in 1928

## Essential Information

MLS® #	E4454897
Price	\$219,000



Bedrooms	1
Bathrooms	1.00
Full Baths	1
Square Footage	746
Acres	0.00
Year Built	1928
Type	Condo / Townhouse
Sub-Type	Lowrise Apartment
Style	Single Level Apartment
Status	Active

### Community Information

Address	215 10309 107 Street
Area	Edmonton
Subdivision	Downtown (Edmonton)
City	Edmonton
County	ALBERTA
Province	AB
Postal Code	T5J 1K3

### Amenities

Amenities	Intercom, Parking-Visitor, Security Door, Skylight, Sprinkler System-Fire, Vaulted Ceiling, Vinyl Windows
Parking Spaces	1
Parking	Stall

### Interior

Appliances	Dishwasher-Built-In, Dryer, Hood Fan, Refrigerator, Stove-Electric, Washer, Window Coverings
Heating	Fan Coil, Electric
# of Stories	3
Stories	3
Has Basement	Yes
Basement	None, No Basement

### Exterior

Exterior	Steel, Brick
Exterior Features	Low Maintenance Landscape, Public Swimming Pool, Public Transportation, Schools, Shopping Nearby, View Downtown

Roof	Roll Roofing
Construction	Steel, Brick
Foundation	Concrete Perimeter

### **School Information**

Elementary	Garneau School
Middle	Allendale School
High	Victoria School

### **Additional Information**

Date Listed	August 27th, 2025
Days on Market	1
Zoning	Zone 12
Condo Fee	\$444

DATA IS DEEMED RELIABLE BUT IS NOT GUARANTEED ACCURATE BY THE REALTORS® ASSOCIATION OF EDMONTON. COPYRIGHT 2025 BY THE REALTORS® ASSOCIATION OF EDMONTON. ALL RIGHTS RESERVED. Trademarks are owned or controlled by the Canadian Real Estate Association (CREA) and identify real estate professionals who are members of CREA (REALTOR®, REALTORS®) and/or the quality of services they provide (MLS®, Multiple Listing Service®)

Listing information last updated on August 28th, 2025 at 5:17am MDT