

\$265,000 - 20 604 62 Street, Edmonton

MLS® #E4454947

\$265,000

3 Bedroom, 2.00 Bathroom, 843 sqft
Condo / Townhouse on 0.00 Acres

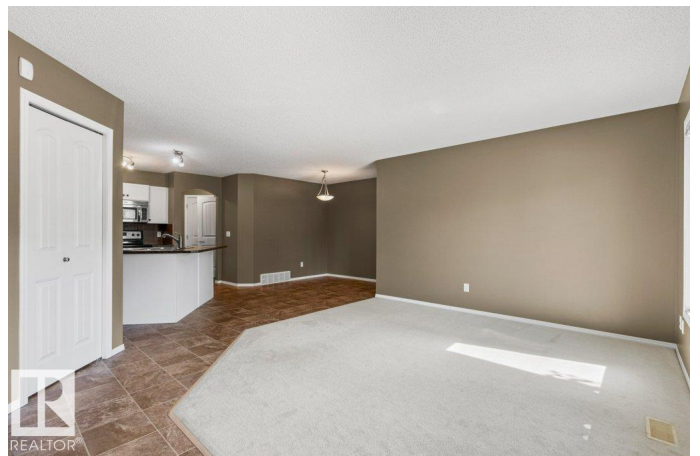
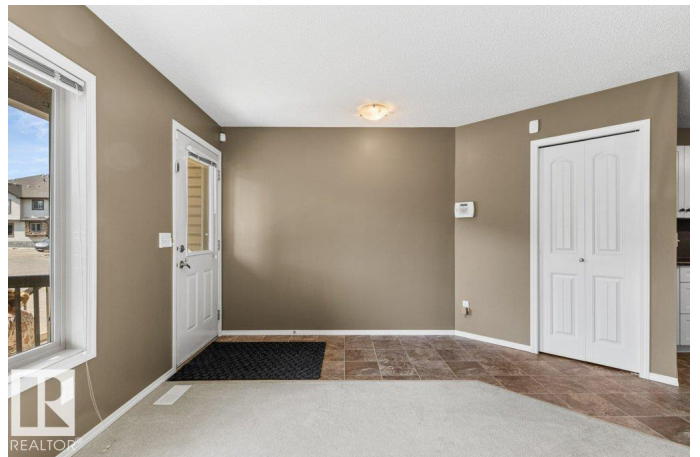
Charlesworth, Edmonton, AB

Large Unique 3 Bed - 2 Bath Property with Pond Views! This property is a rare find - the main level is bright & offers an open concept living room, dining space and kitchen, Primary Bedroom, 2nd Bedroom with patio door to a large balcony (would make a great office space!), laundry room plus full bathroom. The kitchen offers plenty of white cabinetry, island, stainless steel appliances and corner pantry. The additional bonus of the WALK-OUT BASEMENT offers a huge recreation room (wired for surround sound), 2nd full bathroom plus 3rd bedroom. Another enjoyable patio space can be accessed from the basement level offering plenty of room for a BBQ & patio set - plus beautiful views of the nearby pond. This well constructed property also boasts tankless hot water system & heat pump heating. The complex offers 1 energized parking stall right outside your door with options to rent additional stalls plus lots of convenient visitor parking. Great access to commuter roadways, shopping and walking trails.

Built in 2009

Essential Information

MLS® #	E4454947
Price	\$265,000



Bedrooms	3
Bathrooms	2.00
Full Baths	2
Square Footage	843
Acres	0.00
Year Built	2009
Type	Condo / Townhouse
Sub-Type	Carriage
Style	Bungalow
Status	Active

Community Information

Address	20 604 62 Street
Area	Edmonton
Subdivision	Charlesworth
City	Edmonton
County	ALBERTA
Province	AB
Postal Code	T6X 0K4

Amenities

Amenities	Off Street Parking, Deck, Detectors Smoke, Hot Water Tankless, No Smoking Home, Parking-Extra, Parking-Plug-Ins, Parking-Visitor, Vinyl Windows, Walkout Basement
Parking Spaces	1
Parking	Stall

Interior

Appliances	Alarm/Security System, Dishwasher-Built-In, Microwave Hood Fan, Refrigerator, Stacked Washer/Dryer, Stove-Electric, Window Coverings
Heating	Heat Pump, Combination
Stories	2
Has Basement	Yes
Basement	Full, Finished

Exterior

Exterior	Wood, Stone, Vinyl
Exterior Features	Airport Nearby, Cul-De-Sac, Fenced, Low Maintenance Landscape, No Through Road, Playground Nearby, Public Transportation, Schools, Shopping Nearby

Roof	Asphalt Shingles
Construction	Wood, Stone, Vinyl
Foundation	Concrete Perimeter

School Information

Elementary	Ellerslie Campus
Middle	Ellerslie Campus
High	WhiskeyJack School

Additional Information

Date Listed	August 27th, 2025
Days on Market	1
Zoning	Zone 53
Condo Fee	\$312

DATA IS DEEMED RELIABLE BUT IS NOT GUARANTEED ACCURATE BY THE REALTORS® ASSOCIATION OF EDMONTON. COPYRIGHT 2025 BY THE REALTORS® ASSOCIATION OF EDMONTON. ALL RIGHTS RESERVED. Trademarks are owned or controlled by the Canadian Real Estate Association (CREA) and identify real estate professionals who are members of CREA (REALTOR®, REALTORS®) and/or the quality of services they provide (MLS®, Multiple Listing Service®)

Listing information last updated on August 28th, 2025 at 12:02pm MDT