

\$799,998 - 29 Manchester Drive, Sherwood Park

MLS® #E4458429

\$799,998

3 Bedroom, 3.00 Bathroom, 1,513 sqft

Single Family on 0.00 Acres

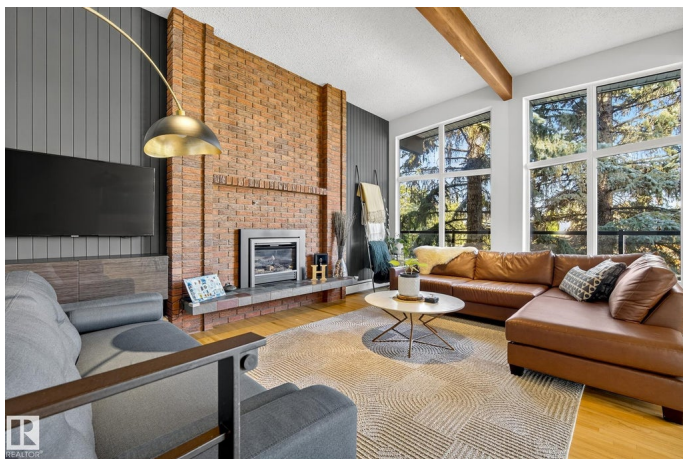
Mills Haven, Sherwood Park, AB

One-of-a-kind bungalow in Mills Haven backing Broadmoor's 15th hole with a private walkway to the fairway! This Chalet style bungalow home impresses with vaulted beam ceilings, floor-to-ceiling windows, and a cozy fireplace in the living room. The updated kitchen offers granite counters, abundant cabinetry & a bright eating nook. The primary retreat boasts vaulted ceilings, 9'™ windows, deck access & ensuite. A basement family room with wood-burning fireplace, gym/den & 3-pc bath add space & flexibility. The in-floor heated 3-season sunroom opens to an oasis backyard with treed views & golf course serenity. Thoughtful upgrades include newer roof, boiler, HWT, windows, dura deck, trim, lighting & custom railing. Finished with an oversized heated double garage & extended driveway, this home is both timeless & extraordinary.

Built in 1975

Essential Information

MLS® #	E4458429
Price	\$799,998
Bedrooms	3
Bathrooms	3.00
Full Baths	3
Square Footage	1,513



Acres	0.00
Year Built	1975
Type	Single Family
Sub-Type	Detached Single Family
Style	Bungalow
Status	Active

Community Information

Address	29 Manchester Drive
Area	Sherwood Park
Subdivision	Mills Haven
City	Sherwood Park
County	ALBERTA
Province	AB
Postal Code	T8A 0T3

Amenities

Amenities	See Remarks
Parking	Double Garage Attached, Heated, Over Sized

Interior

Interior Features	ensuite bathroom
Appliances	Dishwasher-Built-In, Dryer, Stove-Electric, Washer, Window Coverings, Refrigerators-Two, TV Wall Mount, Hot Tub
Heating	Forced Air-1, Natural Gas
Stories	2
Has Basement	Yes
Basement	Full, Finished

Exterior

Exterior	Wood, Stucco
Exterior Features	Backs Onto Park/Trees, Fenced, Golf Nearby, Landscaped, Private Setting, Schools, Shopping Nearby, Treed Lot
Roof	Asphalt Shingles
Construction	Wood, Stucco
Foundation	Concrete Perimeter

Additional Information

Date Listed	September 18th, 2025
-------------	----------------------

Zoning

Zone 25

DATA IS DEEMED RELIABLE BUT IS NOT GUARANTEED ACCURATE BY THE REALTORS® ASSOCIATION OF EDMONTON. COPYRIGHT 2025 BY THE REALTORS® ASSOCIATION OF EDMONTON. ALL RIGHTS RESERVED. Trademarks are owned or controlled by the Canadian Real Estate Association (CREA) and identify real estate professionals who are members of CREA (REALTOR®, REALTORS®) and/or the quality of services they provide (MLS®, Multiple Listing Service®)

Listing information last updated on September 18th, 2025 at 7:47pm MDT