

\$400,000 - 5171 Chappelle Road, Edmonton

MLS® #E4461124

\$400,000

3 Bedroom, 2.50 Bathroom, 1,456 sqft

Single Family on 0.00 Acres

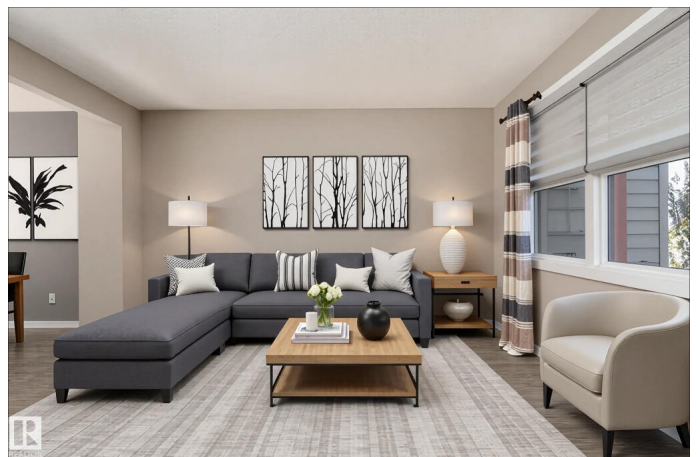
Chappelle Area, Edmonton, AB

Welcome to this bright and spacious 2-storey END UNIT located in the desirable Chappelle area. The open-concept main floor features a sunlit living room with large windows, a dining area, and a stylish kitchen with stainless steel appliances, a generous corner pantry, and plenty of cabinet space. A convenient 2-piece bathroom completes the main floor. Upstairs, youâ€™ll find three bedrooms, including a spacious primary suite with a walk-in closet and a large 3-piece ensuite. The upper level also offers another full bathroom and laundry for added convenience. The unfinished basement is ready for your personal touch and future development. Step out the back door to a spacious yardâ€”perfect for entertainingâ€”and enjoy a double detached garage with extra parking in the back. With a PARK AND GREEN SPACE right across the street and close to playgrounds, schools, and other amenities, this home offers both comfort and convenienceâ€”with NO CONDO FEES!

Built in 2017

Essential Information

MLS® #	E4461124
Price	\$400,000
Bedrooms	3
Bathrooms	2.50



Full Baths	2
Half Baths	1
Square Footage	1,456
Acres	0.00
Year Built	2017
Type	Single Family
Sub-Type	Residential Attached
Style	2 Storey
Status	Active

Community Information

Address	5171 Chappelle Road
Area	Edmonton
Subdivision	Chappelle Area
City	Edmonton
County	ALBERTA
Province	AB
Postal Code	T6W 3H3

Amenities

Amenities	Deck, Front Porch
Parking Spaces	4
Parking	Double Garage Detached

Interior

Interior Features	ensuite bathroom
Appliances	Dishwasher-Built-In, Dryer, Microwave Hood Fan, Refrigerator, Stove-Electric, Washer, Window Coverings
Heating	Forced Air-1, Natural Gas
Stories	2
Has Basement	Yes
Basement	Full, Unfinished

Exterior

Exterior	Wood, Vinyl
Exterior Features	Fenced, Playground Nearby, Schools, Shopping Nearby
Roof	Asphalt Shingles
Construction	Wood, Vinyl
Foundation	Concrete Perimeter

Additional Information

Date Listed	October 7th, 2025
Zoning	Zone 55
HOA Fees	115
HOA Fees Freq.	Annually

DATA IS DEEMED RELIABLE BUT IS NOT GUARANTEED ACCURATE BY THE REALTORS® ASSOCIATION OF EDMONTON. COPYRIGHT 2025 BY THE REALTORS® ASSOCIATION OF EDMONTON. ALL RIGHTS RESERVED.Trademarks are owned or controlled by the Canadian Real Estate Association (CREA) and identify real estate professionals who are members of CREA (REALTOR®, REALTORS®) and/or the quality of services they provide (MLS®, Multiple Listing Service®)

Listing information last updated on October 7th, 2025 at 2:48pm MDT